

FASTFARE

Your Local Family Post Office

Abbey Road (Shops) ☎(01256) 323679

Open Six days a week

Monday–Saturday 9am–5pm

POST
OFFICE

- Play Now Lottery + Scratch Cards
- Papers
- Magazines
- All Post Office Services



FASTFARE PHARMACY

UNIT 3 ABBEY ROAD SHOPS ☎/☎357637

FREE PRESCRIPTION COLLECTION AND DELIVERY SERVICE

We fill your prescriptions at Fastfare Pharmacy from most surgeries.

There is also a free collect and deliver service. We also take your repeat prescription, collect and deliver FREE OF CHARGE. NHS or Private.

Among our many services we offer:- blood pressure check, diabetic, cholesterol check-ups and monitoring. A private consultation area for patients. We advise on medication and treatment of minor illness by our qualified Pharmacist. Pregnancy advice and morning after pill available. We hold a comprehensive stock of motability equipment for hire or purchase. Just ask and help us to help you.

For further details ring ☎01256 357637

Opening Hours

Monday-Friday 9am-7pm; Sat 9am-5pm



Printed by Personalised Print ☎352434 Email:p.print@virgin.net

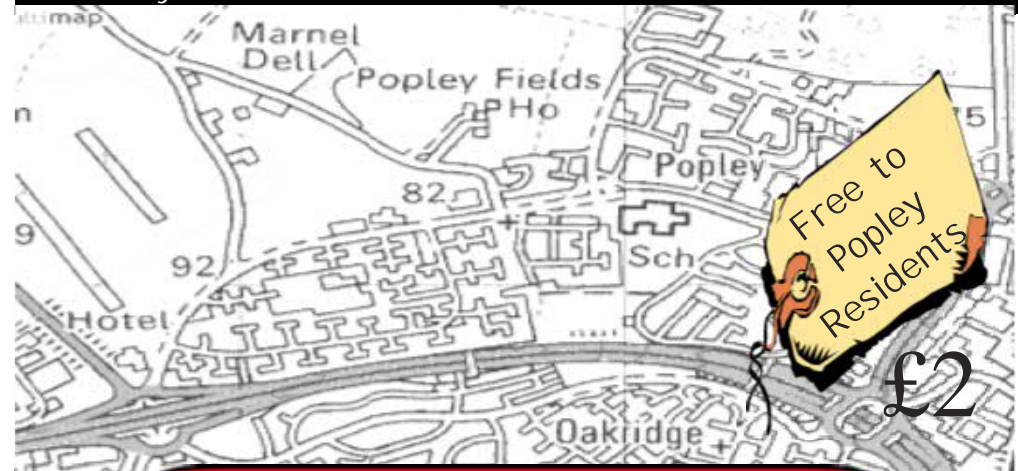
POPLEY MATTERS

PROUDLY SERVING THE POPLEY COMMUNITY SINCE MAY 1992

July 2020

Distribution of 5,400

Issue 221



FULL OF LOCAL NEWS AND VIEWS

Contents

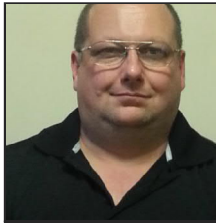
Message from the Editor	Inside cover	The Home Cook King	Page 16-17
The Loddon School	Page 1	Health Information Point (HiP)	Page 18
Councillors' Page	Page 3	Lions Club of Basingstoke	Page 19
Merton Junior School News	Page 5	Melrose Christian Fellowship	Page 20
Popley Fields Family Fun Day	Page 7	Merton pre-School	Page 21
Rotary Basingstoke Deane	Page 9	The Disability Forum	Page 23
Phillips Solicitors Advice	Page 10	MFC Popley	Page 23
Air Scouts Report	Page 11	MHA Living	Page 27
Popley Matters Needs you!	Page 11	Vina, Resident of Marnel Park	Page 27
Arthur Botham	Page 12	Bermuda Community Hall	Page 30
Update on Behalf of Chineham Medical Practice	Page 14	Future of Health Services Across North and Mid Hampshire	Page 30
Patient Participation Group	Page 14	Everest News	Page 31
Your Local NHS Organisations	Page 14	Last Months Competition Winners	Page 32
Hampshire Police News	Page 15		

Closing date to submit articles and adverts (5pm 15-7-20) editor@popleymatters.org.uk



Editor
Jane Frankum

Editor Message:- I think just about everyone I know is longing for us all to resume a freer and more normal life. Not being able to go shopping other than for food has made me use online shopping more, with mixed success. I think we will use it after lock down and save carrying heavy and bulk items. I have missed being able to go out for the occasional meal but have used take out services again very mixed but found one or two gems that we will continue to use after. What were your experiences like? There have been some fantastic voluntary work done and I salute them all. Too many to mention all of them but just a few I have had connections with are "For the Love of Scrubs" they have made 4000+ scrubs and also other PPE items for Basingstoke, Winchester and Alton Hospitals, also wash bags allowing the health workers, nurses and Doctors to wash them safer, they included masks, headbands and hats. I know they should have been supplied by the government but not enough was and these fantastic ladies stepped in. Spotlight that started here in Popley have been distributing food parcels and are way past 5000 delivered, many by our black cab drivers. The Foodbank and Inspiro also were making sure people who are in need get food and toiletries. The Best of Basingstoke started when Dicky Jones heard of an exhausted and tearful nurse whose shifts went after the hours shops closed and just could not get a shopping slot for three weeks, and I can sympathise with that, it is still difficult at times. Dicky made up a box of groceries and delivered it, he then heard of other people who needed help but were not on the shielded list. I know he has delivered over 500 so far and in the beginning paid for the goods himself. 60,000 is the number I read that should have been on the list across the country and for some reason were never put on it so people like Dicky stepped in. I will admit I am biased but I must also thank the Rotary Groups and Basingstoke Deane Rotary in particular who have been supporting Spotlight and others. If you know a group or people that should be thanked please email me editor @popleymatters.org.uk so we can thank them too. Please look after yourselves and stay safe. Email or phone on 01256 819924, or e-mail me editor@popleymatters.org.uk.



Sub Editor
Paul Frankum

The views in this publication are not necessarily the views of the editorial team, the members of the committee, or the Popley Matters magazine.

Editorial Team:- Editor Jane Frankum; Sub-Editor Paul Frankum; Chair Terry Jones; Area Distribution Manager Jeremy Jackman Martin Biermann; Treasurer Christopher Martin; Proof Reader Lorraine Beaney.

Distribution Team:- Hom Bahadur Pun; Jenny Bailey; Linda Banfield; Mollie Beeson; Amanda Bellemy; Martin and Chansopha Bierman; Mark Budden; Charmaine Chapman; Lynne Cooke; Pam Crouziers; Tricia Dennis; Melissa and Amelia Griffiths; Pat Hamilton; Stacy Hart; Stuart Humphries; Dee Jackman; Jeremy Jackman; Terry Jones; Simon Leadbetter; Cathy Li; Angela Lockwood; Christopher Martin; Marta; Alan Marsden; Milly Mcgann; Martin Meppam; Vera Mitchell; Peter Moore; Sue Roux; Sheila Rowland; Luke Simmonds; Alan Simpson; Christine Spencer; Arthur Taylor; Jean Taylor; Wendy Taylor; Christine Thresher; Gell Toungue; Richard Townsend; Chucka Uju; Janet Ward; Carole Wheeler; and Carole Wetton.

Advertising Index

The Loddon School	Page 2	Your Local Locksmith	Page 22	Peter's Chinese Fish & Chips	Page 29
Aurbi Custom Printing and Emboidery	Page 2	IPS Hair	Page 22	Julia Tavener Foot Health	Page 29
Everest Health and Leisure Club	Page 2	Niall Catlin Plumbing and Heating	Page 22	Unique Block Paving	Page 29
Roller Garage Doors Centre	Page 4	Mark Smith Plumbing and Heating	Page 24	Kids Nursery Popley	Page 29
Blue Angel Live-in Home Care	Page 4	K.G.Matthews Carpentry	Page 24	Everest Community Academy	Page 31
Weight Watchers	Page 6	Spencer and Peyton Ltd	Page 24	1st Response	InsideBP
JBDrive	Page 8	GR Autos Service LTD	Page 25	Jonathan Williams Independent Funeral Directors	InsideBP
Spine Team	Page 8	Mickey's Handyman Services	Page 25	Lawrence Young Ltd	InsideBP
M H Autos	Page 8	Apollo Hotel	Page 25	Fastfare Store	Back Page
Rayner Appliance Care Ltd	Page 8	GreenScaping LTD	Page 26	Fastfare Pharmacy	Back Page
Phillips Solicitors	Page 10	Loddon Vale Indoor Bowling	Page 28		
Mamell Bowls Club	Page 13	Blackstar Decorators	Page 28		
		Help for Heroes	Page 28		

Thank you for your support.

1st Response

Heating & Plumbing



FOR

- Heating Installations
- Boiler changes/upgrades
 - Servicing
 - Breakdowns
- Landlord Safety Checks
 - Power Flushing

24 hour – 7 Days a Week

CALL

Jamie Davenport
Tel No: 01256 398611
Mobile No: 07876 687422

JONATHAN WILLIAMS

Independent Funeral Directors

- Family run Funeral Directors with traditional high standards
- Providing a caring dedicated and professional service 24 hours a day, 365 days year
- Private and peaceful Chapel of Rest
- Our Family caring for your family



35-41 Essex Road
Basingstoke RG21 7TB

01256 817603

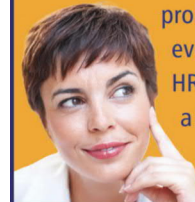
(24hrs)



What do accountants ever do for businesses?



"Well, our accountant does our VAT, payroll and year-end, saves us a load of tax, monitors our cash flow and our financial performance, makes sure we comply with HMRC rules, takes an active interest and is always there when we have a problem... they even handle our HR issues, so quite a lot really."



Call us now on 01256 811415 to book your FREE business review with an active accountant. Offer limited to 4 businesses per month

Lawrence Young

INSPIRED BUSINESS THINKING

Chartered Management Accountants, Tax Advisers and Business Advisers to growing businesses in Hampshire, Berkshire and Surrey.

Saving you time. Saving you tax. Saving you money.

Lawrence Young Ltd. Hart House, Priestley Road, Basingstoke RG24 9PU

www.lawrenceyoung.co.uk

Last Month Competition Winners

Joint winners of the children's competition are Jasmine (8) with a poem on Lockdown and Bob (6) with a stingray made from a paper plate

Runners up for the competition are Nathaniel (8) and Theo (11), with drawings and descriptions of magnificent dragons. Alice, (10) with a colourful painting of love, smiles and hearts and Highly recommended Miryam (11) with her story on Lockdown.

Sue Lawrence told us how hard it was to choose as all the entries were so good and so different. Popley Matters have donated prizes for all the runners up and will contact all the well-deserved winners to give them their prizes.

Star's Dream in Quarantine

There was a girl called Star. She had a pet Raven, called Lunar, who was her best friend. They had been together for 6 years. The year was now 2020. It was a strange year and they lived in a strange world. Anyone who has lived this year would know what I'm talking about. In case you don't know, it was the year of the terrible disease called Corona Virus. Because of this, Star couldn't go to school and so she had to learn at home. At first, Star didn't mind being at home but after a month, she was sad, bored and lonely. Star started to wonder why Corona Virus existed. She didn't know why something so bad would happen. Every night, she was having the same dream. It was her losing Lunar and then getting bullied for not hanging out with the popular girls. It was devastating not having her raven but it was worse getting bullied! After six days, she started to think that her dream meant something. That afternoon, Star and Lunar went for a walk. Star always got inspired by nature! She started to think about her dream and why Corona Virus was a disease.

As she was staring at two butterflies chasing each other, then it hit her! She knew why Corona Virus existed! She exclaimed, "Lunar I know why this illness is on Earth! It's because so many people are being bad! So many people are selfish. The badness does not help when we already have enough stress with Corona Virus going around. It's a time for people to reflect and see if they will change their hearts. Like a test. I wonder if evil will ever go away!" Lunar, who had been staring at Star the whole time, chirped as if she was saying, "Great theory!"

A week later, Star was listening to music. Then she had a brilliant idea to stop her from being bored! She would make her own dances! She had seen people do that kind of stuff on TV. She especially liked a song called Crybaby. She took a step, then one more and then she did a lot of arm movements. Before she knew it, she had made a whole dance to the song! Star, who was very tired now, finally had her dance finished and she would be ready to show her friends when she saw them again! Star said, "I can't wait to make another dance tomorrow!" She had accomplished something in quarantine!

The end

Author: Miryam Aziz (11 years old)

Bob (6) with a stingray made from a paper plate to the right



The Loddon School - Education at Home

While other schools closed The Loddon School, which caters for children with extreme special needs, carried on. "We are a school without classrooms" so educating our children from their home base is nothing new. We have a love and passion for learning outside and for making learning fun.



While outdoors we recognise numbers and learn to count by doing physical activity circuits, slowly building our fitness up. Exploration and investigation finding things that match particular shapes is also a favourite, and we use our special spy glasses which can also be made in card



Science offers so many opportunities to build things and then see the cause and effect of mixing different substances together. While exploring the Roman History we also investigated volcanoes making water, baking soda, red food colour, washing up liquid and vinegar together – then watch it erupt. Following this with pictures and a story book of the events in Pompeii make this a fun topic to learn about.



Currently we have joined with the Wildlife Trust and are having 30 days to Go Wild. The web site is packed with fun activity sheets which adds well to our curriculum and adds a wildlife touch to our yoga sessions. There are many ideas ranging from making a glow worm, butterfly painting, musical rain sticks, making your own binoculars, making a butterfly feeder, nature mandala, a treasure chest, egg carton crab and making your own mini nature reserve.

We hope any readers in the Popley area can join in the fun and have 30 days fun going wild and learning at home and outdoors as we do every day at The Loddon School.



Recruiting Support Workers Now!

The Loddon School provides a home and an education for children aged 8-19 who have exceptional support needs associated with autism and learning difficulties.

Join our team:

<http://www.loddonschool.org/work-for-us/recruitment@loddonschool.co.uk>

01256 884 639

PERSONALISED PRINT AND EMBROIDERY ON T-SHIRTS / HOODIES / SWEATS



© Design is copyright of Aurbi Limited



visit our website: www.aurbi.co.uk
or email us: info@aurbi.co.uk



Everest

Health & Leisure Club

Temporary Closed



WiFi
Classrooms
Meeting Rooms
Performance Theatre (200 Seats)

Gym Stations
Matrix Trainer
Classes

Our Court Sports Hall
Floodlit 3G & MUGAs
Junior & Senior Football Pitches
Oversized & Mirrored Dance Studio

Everest Health & Leisure Club

Everest Community Academy, Oxford Way, Basingstoke RG24 9UP
Gym Team: 01245 337576 Main Reception 01256 337573

Everest Community Academy
Success is an attitude

Open Morning / Evening

Please contact the school to book your place

Open Mornings: 1st July & 8th July, 9th & 11th September
Open Evening: 17th September

Telephone: 01256 465547 Website: www.everestcommunityacademy.org E-mail: info@everestcommunityacademy.org

Bourne Education Trust
Transforming schools... changing lives

Ofsted
Good Provider

Everest Students Continue to Excel

Despite not being able to attend school since March, Everest students and their families have continued to show resilience and commitment when working from home.

Students have been given access to a variety of resources over the period of lockdown ranging from work packs, textbooks and the recent introduction of 'Everest Online'. Students can access lessons via an online platform which includes voice instructions from staff. Students can also submit work and be provided with feedback and areas of development. This new approach has allowed students to communicate with their teachers and ask questions if they are unsure.

Away from our new online classrooms staff have worked extremely hard to 'check in' on all students and families wellbeing. We have also produced many celebratory videos highlighting student successes during this time, these have been posted to the schools social media accounts. We would urge any Everest student who needs additional support to head to our website for the latest information.

We hope to see the school return to normal by September and will of course keep everyone updated on the next steps in the coming weeks.

Stay safe, have a great summer break

Bermuda Community Hall

Tiny steps pre-school starting soon, for further details ring Helen or Connie on 07907815270

There are lots of activities going on at Bermuda Hall, come along and join in!

Monday from 6:30pm to 8pm we have kick boxing.



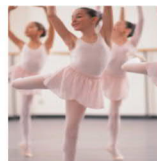
Tuesday night is bingo night New members are welcome! Doors open at 7pm, eyes down at 8pm and finishes around 10pm. Refreshments are available.



Wednesday is yoga night with Lou Bedford. It starts at 6:15pm and finishes at 7:15pm, for more details ring Lou Bedford on 07753109222 or at www.loubefordyoga.co.uk



Come along on a Thursday night for street dance and ballet 4:30pm to 6:30pm for details ring Samantha Pike on 07811299484



Friday Club is available to infants/juniors Yr R to Yr 6 at 6pm to 7:15pm. There are many activities for the children to get involved in: singing, super book animated bible stories, games, tuck shop and more. Friday Club is now free.



The hall is also available to hire for parties at reasonable rates. Ring 01256 363156 for details.

Future of Health Services Across North and Mid Hampshire

Have your say on the future of health services across north and mid Hampshire by getting involved in the Hampshire Together: Modernising our Hospitals and Health Services programme.

Hampshire Together is an exciting programme that will involve all NHS and social care services across Alton, Andover, Basingstoke, Eastleigh, Winchester and the surrounding areas.

This will include the construction of a brand new hospital – but the programme’s impact will reach far beyond the walls of this new building, involving GPs, mental health, community care, social care and the wider voluntary sector, as well as acute hospital care.

Our central aim is to deliver a healthcare system that supports patients, their families and their carers to access the right care, in the right place, at the right time in order to keep them healthy.

The programme is being run by Hampshire Hospitals NHS Foundation Trust, the Hampshire and Isle of Wight Partnership of Clinical Commissioning Groups and West Hampshire Clinical Commissioning Group.

Engagement will focus on a Listening Document, which is available on the Hampshire Together website – www.hampshiretogether.nhs.uk.

The Listening Document sets out the challenges facing the health system across north and mid Hampshire and the potential benefits of the programme, as well as highlighting the issues that need to be taken into consideration when thinking about the decisions that need to be made.

You can also follow the programme via social media, on Facebook (www.facebook.com/hampshiretogether) and Twitter (www.twitter.com/HampshireMOHHS).

If you would like to receive the listening document and a comment form by post, write to the programme at FREEPOST Hampshire Together (no stamp required) with your name and address.

County Councillor Report: After our meeting by video with County Council officers we are pleased to say that the work on the next phase of upgrading paths is being drawn up and once the report is ready we can adjust if needed. The old outdated and unusable dropped kerbs along Abbey Road will be put on the work programme for 2021/22 but the ones already marked will be repaired and brought up to standard sooner.

What a nightmare the waste collection is at the moment but the domestic waste collection should improve as the workforce are starting to return to work. However the fortnightly collections will continue into July then there will be a public consultation on what the administration at Basingstoke and Deane Borough Council call looking forward. Fortnightly bins may become the norm and a waste food collection service introduced. I can't comment until I see the report. Wade Road Tip is the responsibility of the county though it is run by contractors for them. I think having an appointment only to take the bulk waste will have a lot of difficulties and will be on constant review. If you see fly tipping and waste please report it to BDBC on line or phone 844844. Cllr Jane Frankum 01256 819924 email:- jane.frankum@hants.gov.uk.

Popley West: We continue to be really busy with ward and casework. It is always great to be able to report some good news. The painting of the white lines marking parking spaces in the Abbey Road shopping area it has had a great impact on parking but the test will be when the children go back to school. Really happy to see that the railings are now currently being erected in Popley Community Park and the new play and gym equipment are due to be started in September, and hopefully completed by the end of October. Thank you everyone who sent in their ideas and what you felt was needed so that it really will be a family park for residents of every age and ability, and one that we hope you will all use, enjoy and look after. We are asking for a few more litter bins as well, hopefully it will be used a lot more. We hope once the equipment is fully installed that residents will enjoy walking, exercising and maybe have some family picnics. Please put your rubbish in the bins or take it home. There have been quite a few complaints about dog mess being left around the park Most dog owners

and walkers are responsible people but there are a few that leave the foul mess on the grass or if they do bag it they leave it in the hedges or hanging from the tree branches. They can and will be fined. Across Popley there have been lots of reports and complaints about moped bikers tearing around fields, parks and on the paths. Paul and I have contacted the chief Inspector and sent him a copy of the many contacts we have had. We will follow up with the police and let you know what action they propose to take.

Cllr Paul Frankum 01256 819924

cllr.paul.frankum@basingstoke.gov.uk

Cllr Jane Frankum 01256 819924

cllr.jane.frankum@basingstoke.gov.uk

Popley East: "We continue to work with residents and are able to undertake case work remotely as required. Albeit many agencies are offering limited responses during lock down we are achieving results for many residents on the issues they face "

Cllr David Potter 07941507801

cllr.david.potter@basingstoke.gov.uk

Cllr Janet Westbrook 07747335200

cllr.janet.westbrook@basingstoke.gov.uk



Roller Garage Doors Centre | Fitting Garage Doors since 1995

**FREE
7 YEAR
MOTOR
WARRANTY**

- ✓ Fully insulated
- ✓ Custom made & British built
- ✓ Free no obligation quotations
- ✓ Best Price Guarantee
- ✓ Free 7 year motor warranty

T. 01256 962660

Roller Garage Doors Centre
(Part of Access and Security Systems Ltd)



www.rollergaragedoorscentre.co.uk

Blue Angel **Live-in and Home Care**

Stay in the comfort of your own home and enjoy life to the fullest

**FOR A FREE
ASSESSMENT CALL
01256 592 593**

www.blueangelcare.com
hampshire@blueangelcare.com



Peter's

Chinese Food and Fish & Chips to take away

Unit 2, 1 Fair Isle House
Popley, Basingstoke
Hants RG24 9XD

(Maldive Road Straight Up)

Telephone Basingstoke

01256-328740

Telephone Orders (To Collect)

Opening Hours

Monday

5:00pm–10:00pm

Tuesday To Saturday

12noon–2:00pm and 5:00pm–10:00pm
Sunday & Bank Holiday Mondays Closed

Julia Tavener

MCFHP MAFHP

Experienced
Foot Health
Professional



Foot care in the
**Temporary
Closed**

07875 137299

j.tavener@hotmail.co.uk

UNIQUE BLOCK PAVING

Derek Hooley

Fully insured, local tradesman
with 30+ years experience

- Driveways & Patios
- Walls
- Fencing
- Cleaning of existing drives & patios

No job too small

For a free, no obligation quote call

07973 865359

Or

01256 474912

uniqueblockpaving@talktalk.net



Find me on Facebook
[@UniqueBlockPaving](https://www.facebook.com/UniqueBlockPaving)



KIDS NURSERY IN POPLEY

We offer inclusive childcare provision for children from 3 months to 4 years. We are open 51 weeks of the year 8am-6pm

SPACES AVAILABLE

Please Contact: 01256 464750

KIDS Nursery, Shakespeare Road,
Popley, Basingstoke, Hampshire,

RG24 9BP

FREE TRIAL SESSION!

Why not get into indoor bowls?

It's friendly, it's fun and it will help keep you fit.

Temporary Closed

Why not try one of our Wednesday free drop in sessions **12.0 - 2.0pm & 4.0 - 6.0 pm?**

Loddon Vale Indoor Bowling Club,
Leisure Park, Churchill Way West, Basingstoke, RG22 6PG
Tel: 01256 356507, email: info@loddonvaleibc.co.uk

BLACKSTAR DECORATORS



internal & External Decorations

Mobile
07961825071

Office
01256578050

Email
Blackstardecors@gmail.com

HELP for HEROES
Support for our Wounded



MERCHANDISE FOR SALE

Wristbands	NEW STOCK NOW IN	T Shirts
Hero Bears		Lanyards
Tea Towels		Lapel Pins (all services)
Mugs		
Key Rings		

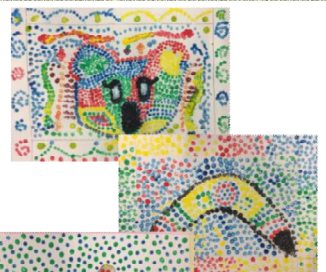
And much, much more to order from

Jonathan Williams, 35-41 Essex Road, Basingstoke, RG21 7TB

01256 817603



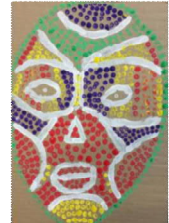
Merton Junior School has continued to see children in throughout the lockdown and they have all been super busy creating some amazing pieces of writing and art work. Over the past 10 weeks we have been creating mini projects for the children of key workers to complete in school, using a different theme each week. The themes have been a huge hit with many children being able to access skills that have been tucked away. Here is some of the magnificent work that they have produced.



Aboriginal art...



African masks using pointillism...



Raft building...

Home learning to be proud of...



We are so incredibly proud of all of our pupils and to learn that some have been spending their time at home to help the community is just incredible. Rose has been making fabric face masks for the community and Amelia has been making kindness keyrings to raise money for the NHS.



We cannot explain how proud we are of both of these girls and their selfless attitude.



Romsey Close, Popley, Basingstoke, Hampshire RG24 9HB
admin.office@merton-jun.hants.sch.uk
(01256) 326573



Get 12 weeks free

WW and Hampshire County Council are working together and are delighted to invite you to join WW

To qualify for this free programme you need to be:

- Over 16 years of age (16-17-year-olds need to be accompanied by a parent or guardian)
- A Body Mass Index (BMI) of 30 or above
- A resident of Hampshire County Council

To join for free
Call 0345 602 1000

WW logo and Health Solutions
© 2020 WW International, Inc.



Temporary Closed

Find your nearest WW Workshop

weight watchers
reimagined

St Gabriel's Church
Tuesday 1:30pm and Thursday
6:30pm Tewkesbury Road, Popley
RG24 9DU

0345 677 7788* **WW.com**   

*Standard network charges apply.
WW logo is the trademark of WW International, Inc. © 2020 WW International, Inc. All rights reserved.



bringing quality to later life

Hello Popley from all of us from the Live at Home Team in Basingstoke and Deane we are currently working within the guidelines set out from the government and health and safety recommendations, however we believe it is still not 100% safe for us to resume normal weekly activities for our members. We are currently continuing with our telephone befriending service and food shopping we are also delivering hot meals each week. We have had a huge response on people coming forward to volunteer and help with the telephone befriending and local deliveries.

We, as a team have been sending information out via the post to all our members. We also include some activities they can complete at home. We aim to ensure they feel secure and lookout for their well being.

Again it's scary times with more and more shops opening and places becoming busier and more and more people out and about the advice I have been giving to our members is to only go out if really necessary, when they do go out keep safe as it's may be very daunting after being so isolated for so many weeks. The best and current advice is keep your distance to two meters apart especially when in any form of queue, face masks must be worn on public transport. Taxis are only allowing a maximum of two passengers per car and wear your mask to keep both you and the driver safe.

I would like to thank Basingstoke Spotlight for providing the food parcels to the vulnerable in and around the town area and to all the volunteers that have supported them in getting the parcels delivered safely.

A thankyou to Oasis cafe aka Penny's Meals on Wheels for providing good well balanced and hearty meals to the community at the cost of £5 per two course meal. Thank you to the County Councillors that donated £750 each from their grants budget that has helped us to make sure we give a good and welcoming service for our current members.

Last but by no means least a big thank you to all the volunteers that have signed up and supported MHA live at home

Together we can stop isolation within our older generation.

For any information or offers of help please contact me at francesca.wildash@mha.org.uk or ring me on 07720680403

Be safe be kind
Francesca Wildash

Dear Readers,

It's a given that the past few months have been challenging for all our residents. But we have to admire our resilience and community spirit in these difficult times. And so, sat here gazing at the rain; a short poem from me:

*Safely locked in our homes, starved of family hugs, we did not let this new bug roam.
Riding, baking, making, mending, volunteering, drawing, cooking are the ways we helped us & ours.*

Walkabout's nods and smiles to the faces we now recognise. New trails, red fields discovered and shuttered; the Beast spotted and vanished. Rapid test pioneered, waiting to hear if we can now roam without fear. And now we pause for the new normal to hit home.

Stay safe and until next month,

Vina R
Resident of Marnel Park

GREENSCAPING Limited

Greenscaping Ltd are specialists in landscaping services working throughout Hampshire and the surrounding areas. All our work comes with a guarantee and is never finished before the customer is satisfied. We will work hand in hand with you from design to completion to ensure that you get the finished product you wish for.

Astroturf **Indian Sandstone** **Block Paving** **Resin Driveways**

Fully Insured | Fully Qualified | Free Estimates And Advice
You Are Entitled To A Fourteen Day Cooling Off Period

Office: 01256 637 870
On Site: 07379 700 762
www.greenscapingltd.co.uk
greenscapetreeandlandscaping@outlook.com
The Square, Basing View, Basingstoke, RG21 4EB

CONNECT 4 SUMMER 2020

FAMILY FUN DAYS
AT
Popley Fields Community Centre


29th July –
25th August 2020

Connect with us!

www.connect4.org.uk
✉ admin@connect4.org.uk
📷 [@connect4summer2020](https://www.instagram.com/connect4summer2020)
📘 [facebook.com/Connect4Summer](https://www.facebook.com/Connect4Summer)

JBDRIVE

James Bone M: 07823884522
ADI

Temporary Closed 

£30 per Hour

£29 P/h students

Single lesson Discount for holders of Student NHS or Forces ID cards

Full 'L' Test training with theory tuition included



WWW.JBDRIVE.CO.UK
E: JBDRIVE@LIVE.COM

M H AUTOS SERVICE CENTRE

Unit 11 Vickers Business Centre
Priestly Road, Basingstoke
RG24 9NP

Servicing and repairs to all makes and models cars and light commercials

Pre-MOTs/MOTs arranged by appointment
clutches, brakes, shockers
free fit exhausts, timing belts
tuning, welding, diagnostics checks

Motor vehicle specialist

Free delivery and collection service
Mobile & workshop facilities to suit you

For a friendly and personal service call Mark on
Tel: 01256 467707 Mobile: 07879 638650

SPINE TEAM CHIROPRACTIC

High quality and friendly MSK Back and Neck Pain

Specialist Temporary Closed

Back and Neck pain

If you have a long wait for treatment or it has not worked come and talk to us

East Barn, Lychpit Centre
01256 466 666

www.spineteam.co.uk

DOMESTIC APPLIANCE SERVICES

M I Rayner

Rayner Appliance Care Ltd



REPAIRS • SALES • HIRE

REPAIRS TO ALL LEADING MAKES & MODELS OF
Washing machines • Tumble Dryers
Dishwashers • Electric cookers

25 Years Experience in
Domestic Appliance Services in Basingstoke
Trading standards Approved



BASINGSTOKE 01256 354295
'Our success has been in your recommendation'

www.raynerappliancecare.co.uk

G R AUTOS SERVICES LTD

ALL YOUR MECHANICAL NEEDS

SERVICES, M.O.T.s, REPAIR WORK, BRAKES, CLUTCHES, CAMBELTS, HEAD GASKETS, TYRES, RECOVERY, AIR CONDITIONING

LOCAL FREE COLLECTION AND DELIVERY

QUOTE THIS CODE FOR 10% DISCOUNT- TCS06

CONTACT:-GRAHAM HOBBS

07900675181

grhobbs52@hotmail.com

Qualified Plumber and Property Maintenance Services

Based in Popley

Bathroom and Kitchen refits
Plumbing and Heating
Certified Gas and Electric Works



563148

Plastering, Painting and Decorating
Carpentry
Fencing

HANDYMAN SERVICES/
SMALL JOBS WELCOME

No call out charge

Free Estimates

Call Mickey

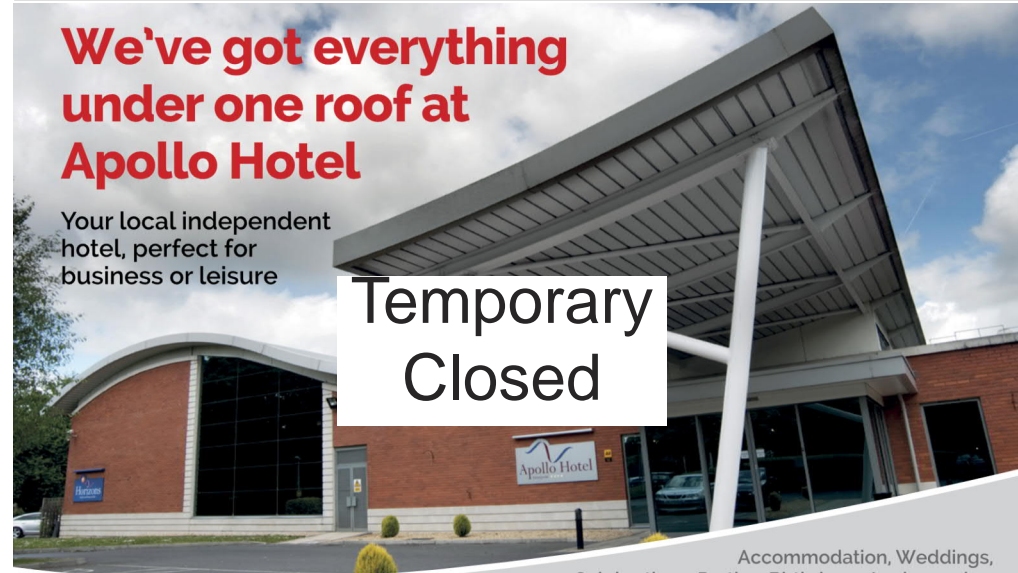
Tel No: 07888 828 542

Email: mickeyfish@hotmail.com

We've got everything under one roof at Apollo Hotel

Your local independent hotel, perfect for business or leisure

Temporary Closed



Accommodation, Weddings, Celebrations, Parties, Birthdays, Anniversaries, Meetings, Health & Fitness Club, Beauty Treatment Rooms

Apollo Hotel
Basingstoke ****

01256 796700
www.apollohotels.com
enquiries@apollohotels.com



MARK SMITH
EST. 1971
PLUMBING & HEATING

MARK: 07968 808454
MARKMSPH@GMAIL.COM
GREG: 07766 111302
INFO@MARKSMITHPLUMBING.CO.UK
WWW.MARKSMITHPLUMBING.CO.UK



NO CALL OUT CHARGE AND FREE QUOTATIONS

All Plumbing and Heating Undertaken
Bathroom Design and Installation Service
Including tiling, flooring, lighting & decorating
Landlord Safety Certificates
Gas Boiler service, breakdown and replacement
Oil & Gas Boiler installation: Ideal, Worcester & Grant
Water Softeners
Digital shower / pumps and replacement
Tap replacement or repair
Unvented hot water
Gledhill, Megafllo & all makes of cylinders
Wireless room thermostats / heating control upgrade
Hive and Nest installation



Proud members of
Checkatrade.com
Where reputation matters

K.G. Matthews

Carpentry and Construction



All types of Carpentry work including:

- Kitchen and Bedroom units
- Stairs, Locks and Doors
- Also Home Improvements



For a Friendly and Professional service call

Ken now on

07920003278

tadleycarpenters.co.uk

Spencer & Peyton Ltd

Funeral Directors and Monumental Masons
24 hours a day



3rd Generation family owned and run since 1961

Pre-paid funeral plans discussed without obligation

380 Worthing Road
Basingstoke, RG22 5DZ
01256 323165

7 London Road
Hook, RG27 9DY
01256 761717

spencerandpeyton@btconnect.com
www.spencerandpeyton.co.uk

Trading Standards approved

ON SITE FLORIST



01256 355556
www.theflowergirlflorist.co.uk



Basingstoke Deane

Rotary



CONTACTS

Helen Ricketts: -
helen@highpathway.co.uk
or
Paul Temple:-
tempaul45@gmail.com

YOUR LOCAL
ROTARY
ROUNDUP

July 2020

Rotary works with Shelterbox

Covid 19 and Emergency Disasters

There may be a pandemic but some communities in the world are also dealing with natural disasters and conflict which leaves them with nowhere to live whilst still living with the virus,

ShelterBox is an international disaster relief charity established 2000 by Rotarians in Helston, Cornwall, UK. They provide emergency shelter and other aid items to families around the world who have lost their homes. Shelterbox is working to help people protect themselves in dangerously crowded camps in Syria and disaster zones in flooded areas of Indonesian and many other places

A full Shelterbox provides a robust tent and the basic essentials for sleeping, cooking and water purification for a family of 10 to survive for 6 months. If needed in that area, mosquito nets will be included. There will also be small toys and books and pencils for children
'Having somewhere dry and warm to sleep, to prepare meals and be with your family is vital for starting the long process of rebuilding your life'

Shelterbox are partners with Rotary International, and Rotarians around the world help shelterbox to connect with local communities more quickly when disaster strikes.



The charity's HQ is based in Truro, Cornwall UK and they coordinate disaster relief and get it to where it is most needed even in a pandemic.

To Donate visit their website <https://www.shelterbox.org>

As coronavirus spreads, Shelterbox saves lives

Check our Website and Social media for updates

Basingstoke Deane Rotary is a group of 35 men and women from a wide variety of backgrounds. All live locally in the borough but some commute to work outside Basingstoke. Most joined Rotary to help others less fortunate, and they find Basingstoke Deane Rotary adds another extremely enjoyable dimension to their lives.

If you would like to find out more about how we enjoy ourselves, just tune in to www.rcbd.org.uk to see what we have coming up, or contact Helen or Paul above to find out more. We think you'll be pleasantly surprised.

Facebook: @RotaryBasingstokeDeane

Twitter: @RBstokeDeane

JULY CORONA QUIZ

Below are clues to name Pop Groups or Rock Bands around the world. The spelling is not always the same- it may just sound similar.

e.g. Gary Power's spy plane = U2

1. Quartet of spinning toys
2. The shaver is not dark
3. Distorted vision
4. Not a light Sunday
5. Primates from the North Pole
6. Gathering no moss
7. Guarding the Piste
8. These lads went surfin in the USA
9. Not death in the Orient
10. Danger, Spice warms up Mexican food
11. In the beginning.....
12. Ginger maidens, well one is
13. Gathering no moss
14. 16 B.A., B.Sc. and MA
15. Girls not allowed
16. Who uses the YMCA
17. Upholders of the law
18. A desert watering hole
19. West, Sutcliffe and Crippen
20. George, Andrew, Patrick and David

Answers will be on our website and Social Media after July 1st 2020

We all owe huge thanks to the NHS and all Care workers in our local area

We also need to acknowledge and be thankful for the work of BVA, The Food Bank, Inspiro and Spotlight who have stepped up over and above their normal charitable work to ensure that the shielded, vulnerable and people in poverty have been supplied with emergency food ably supported by many volunteers and local supermarkets.



Browsing for Properties

Since the housing market reopened in May, Zoë Baxter who is a lawyer working in the Residential Property team at Phillips Solicitors incorporating Brain Chase Coles, has seen a significant increase in enquiries.

Zoë said: "As of Wednesday 13th May some of the restrictions on the property sector were relaxed allowing for Estate Agents to open, viewings to take place, surveys to be undertaken, removals to happen and building sites to re-open – all following the social distancing rules of course."

Since the easing of restrictions, popular property websites have seen an increase in traffic from visitors.

Zoë notes that Rightmove reported that on Wednesday 13th May, visits to their website increased dramatically with their figures at a level that was in fact 4% above the same Wednesday in the year before and 111% up on the week before.

"It seems that many of us have been trapped in our homes for several weeks dreaming of a new place to live and perhaps have discovered new priorities for what is important in our new home," said Zoë.

"Here at Phillips Solicitors the Residential Conveyancing Department has remained open throughout the crisis and are pleased to note an increase in requests for quotations and new enquiries. It remains to be seen how the property market is affected in the long run by the Covid-19 crisis and if house prices drop by any significant level."

Our conveyancing lawyers are continuing to work hard to make sure risks are minimalised, contracts are kept to and your transaction is as seamless as possible during this difficult time.

We have taken steps to continue to strive to provide a highly personalised service to you and are able to use various video platforms such as Zoom, Skype and FaceTime, so we can get in touch with you and other parties involved in the sale, regardless of location.

To find out more about how we can help you please contact Zoë Baxter by calling 01256 854623 or email zoe.baxter@phillips-law.co.uk

Alternatively, contact us via our website by visiting www.phillips-law.co.uk/residential-property-services



Looking for a family friendly new walk to try? Enjoy community events? Like supporting local charities? If yes to any of these questions then please read on!

To raise community spirit and much needed funds, Basingstoke & District Disability Forum (BDDF) are proud to share details of the first (hopefully annual) Chineham & Sherfield Park Scarecrow Trail.

Over seventy businesses and families will display characters or scenes from their favourite books via a scarecrow in their front gardens.

We invite you to walk our two trails any time between 9am and 6pm on the 25th/26th of July.

There will be one guided walk available for anyone who would like extra support including those with visual impairments. Just message me for info!

Trophies, kindly sponsored by Loddon Properties, will be awarded to a number of categories including Best In Show. All voted for by you.

Trail walkers can win too... Via the raffle with amazing prizes all donated by local businesses and individuals (thank you!).

Over the past few months there has been little scope for charities to raise funds. Which are vital to continue their work - often supporting the most vulnerable members of our society. Our partner charity for 2020 is the incredible children's charity Sebastian Action Trust.

Please join our Facebook event to see further updates and where to purchase trail maps. These will be for a suggested donation of £3 with all funds to the charities.



Welcome back everyone to Grassroots football, after, what has been unprecedented times, not just for the UK, but globally.

The 2019/20 football season, unfortunately closed prematurely in March due to the Coronavirus Pandemic, with the safety and welfare of the players, parents, coaches and volunteers, being at the forefront of the FAs decision.

Most leagues decided to use a points per game played, to decide the winners of their leagues across all age groups. This saw the following results for the club: U13 RWBL - Runners Up and U16 PHYL - Runners Up

Congratulations to both teams, who were unfortunate to not win their divisions. #alwaysproud #redandblackarmy

The new 2020/21 season is scheduled to start in September, however we are awaiting final confirmation from both the leagues and the FA, but it is looking promising at this point.

We are looking for a few more players next season, if you have a child moving into the following age groups, please contact the club manager, who will be able to provide training information:

- AllStars (Going into year R & 1 in September) - Contact Nicci Gambrell - allstars@mfcpopleyyouth.co.uk
- U7 (Going into school year 2 in September) - Contact Stuart Graham - u7@mfcpopleyyouth.co.uk
- U10 (Going into school year 5 in September) - Contact Pete Davey - u10@mfcpopleyyouth.co.uk
- U11 (Going into school year 6 in September) - Contact Olu Owolabi - u11@mfcpopleyyouth.co.uk
- U12 (Going into school year 7 in September) - Contact Deane Punter - deanepunter@btinternet.com

We look forward to welcoming everyone back in September!

Many Thanks
Nicci Gambrell

YOUR LOCAL LOCKSMITH

Malcolm - 24/7 personal service

Call: **01256 464778**

Mo Temporary 92
Closed

FREE ESTIMATES

Locked out – Broken Key or Lock – Lost keys
Doors, Windows, Garages etc. + Hardware & Accessories

Member of the UK LOCKSMITHS ASSOCIATION
Fully Insured – Fully Guaranteed & DBS Checked
Email: m-wallace@outlook.com

IPS hair

Styling for the whole family

Award winning and experienced stylist. Available to style your hair in the comfort of your own home

£5 Temporary Closed

£30 Only £25 With this voucher

Phone Ian on: 0790 9577 199
01256 363600

www.ipshair.co.uk

Basingstoke Air Scouts

Base 2900, Carpenters Down, Popley. RG24 9AE
Website, www.base2900.co.uk
Registered Charity, 267734

Group Scout Leader	Colin Karlake	07796772500
Assistant Group Scout Leader	Douglas Gowan	07733325498
Beaver Leader	Mandy Pain	07508204098
Cub Leader	Charlotte Bell	07919148376
Scout Leader	Kevin Pocock	07717108560

With there still being no Face to Face Scouting happening due to Covid-19, the Beavers & Cubs have moved to having combined weekly meeting using Zoom.

These meetings have included, a Virtual Pet Show on the 26th May where the Cubs, Beavers & Leaders showed off their pets & talked about the favourite food, any tricks they can do & if they had any bad habits, amongst other things, for those who didn't have a pet they got a chance to talk about their ideal pet real or imaginary



The meeting on June 2nd was a mixed-up puzzle night, with an extra special with an idea taken from Scoutadelic YouTube Channel, with the 5 Minute Song Challenge, this involved the Beavers & Cubs been given 5 minutes to write a song based on the theme of "mixed-up things", once they had all written their songs, some with the help of their parents, they all had a chance to perform their song, either be singing or reading it to the rest of the Group, there was some fantastic songs given the fact they only had 5 minutes to complete the activity in

On the 9th June the Group held its first ever marvellously mystical Virtual Magic Show with everyone over the previous week learning & practicing a magic trick that they can then show off to the rest of the Group, with instructions not to share the secret of the trick, I know there is no secret, it's all magic 😊. This was a great night with some very good tricks done by the Beavers & Cubs, some with the help of parents, tricks included the magic unpopable balloon, the case of the wine glass & disappearing coin, the amazing levitating Cub



The unpopable balloon

We are now starting to plan future meetings based on ideas provided by the Beaver & Cubs, these will include

- Hobbies & Collectors evening
- A craft competition night, possibly making something out of junk,
- 3 marker challenge where the Cubs & Beavers are given a picture and then must pick 3 colouring in pens at random to colour the picture in.
- Baking a cake in a mug
- Guest Speaker

Keep watching this space to find out what else we are getting up to in the virtual world of Scouting & hopefully it won't be long before we can start reporting on what we are getting up to in our face to face meeting

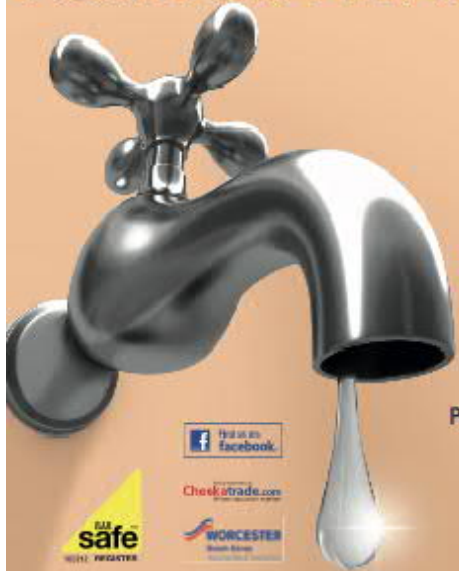
Douglas Gowan
Assistant Group Scout Leader



Popley Matters Needs You!

We want to resume printed copies but we desperately need more advertisers from £35 for a quarter page per month and we need volunteer delivers contact me:- 405 Abbey Road, 01256 819924 or email editor@popleymatters.org.uk

FOR MORE THAN JUST A LEAKY TAP



Niall Catlin PLUMBING & HEATING

EST. 1991

Leaky taps to full bathroom installation
Power flushing | Water softeners | Hot water cylinders

Boiler breakdowns, repair and servicing
Boiler replacement | All allied trades
All aspects of plumbing and heating



www.niallcatlin.co.uk

01256 818086 | 07774 741021

Dear Friends

I guess the world is looking so vastly different from what we might have expected at the beginning of this year to where it is now. Social distancing, schools, shops, leisure and hospitality, healthcare, family relationships are all beyond their usual recognition and there is uncertainty about how these key elements of our lives might look in both the immediate and long-term future. Hopefully, what might emerge is a more caring, less independent, and more inter-dependent society.

I have been reflecting on a particular part of the history of the Israelite nation written in the Old Testament. They had grown into a powerful nation. Wealthy and prosperous they had forgotten their God. They had become self-reliant, independent and individualism reigned supreme. Yes, there was religion, but it was little more than lip service and had become more a platform for corruption and individual wealth creation, status and power. Despite warnings from the prophets – the messengers from God - about the error of their ways and potential consequences their arrogance blinded them to the direction their individualism and corporate ways was leading them.

Eventually a powerful and hungry nation invaded Israel and the people were completely unprepared for what became the savage destruction of all they held dear. There was a sudden realisation that what was precious and held real value had been lost. Buildings, positions in society, personal wealth and possessions paled in comparison to their relationship with God and their fellow Israelites. The invasion and subsequent losses refocussed their whole being on what was profoundly important.

In a similar way we have been invaded by Coronavirus. What we previously considered to be of importance: wealth, personal possessions, status, and power have suddenly loss their gloss. Avoiding the virus or if we have it, surviving it become the focus of our attention. Different perspectives are emerging from the pandemic. While it has been raging among us, we have become more attentive to those around us, more caring of each other and recognising just how valuable and meaningful relationships really are to our lives. There has had to be a refocussing on how we live our lives and what is truly of importance and what is not. We can only hope and pray these new perspectives survive the journey back to normality

The Israelites we carried off into exile, to a land where the cultural landscape was completely foreign and where they had to relearn their history and to preserve and sustain the true values of their past and what had made them such a great nation. To refocus their attention on God and each other.

Jesus said "I have come that they may have life and life in all its fullness" I wonder if we might, as an outcome of Coronavirus, do the same and refocus our priorities and our attention to what is truly of value and makes us human. Amen!

Every blessing to you and yours.
Rev. Arthur
01256 324734
www.stgabrielspopley.net



**RATED OUTSTANDING BY OFSTED IN
PROVIDING EXCELLENT CHILDCARE FOR 2 – RISING 5 YEAR OLDS**

**LIMITED SPACES STILL AVAILABLE FOR SEPTEMBER 2020
IN OUR LARGE PURPOSE BUILT PRESCHOOL WITH LARGE OUTSIDE
PLAY AREAS & FOREST SCHOOL ACTIVITIES**

**UNFORTUNATELY, DUE TO COVID-19 WE ARE UNABLE TO
ACCOMMODATE PARENT DROP INS
BUT PLEASE FEEL FREE TO CHECK OUT OUR WEBSITE & FACEBOOK PAGES**

FOR MORE DETAILS PLEASE CONTACT US BY ANY METHOD BELOW:

**Website - <https://www.mertonpreschool.co.uk>
Facebook - <https://www.facebook/groups/mertonpoppits>
Email: mertonpresch@gmail.com
Tel: 01256 353100**



IF YOU DON'T KNOW ME BY NOW

We're Melrose Christian Fellowship and we're the church that meets in Melrose Community Hall, Popley 4, off of Abbey Road (next to Premier, the post office and the pharmacy). Our church has been meeting there for the last 42 years.

WHEN WILL I SEE YOU AGAIN?

We use zoom (<https://zoom.us/>) to see each other. Everyone connects through their computers or phones via zoom in their homes. You have the option to show your face or not, but still hear what's going on. Here's what's going on during lock down:

ZOOM QUIZ NIGHT (STARTS 23RD JUNE)

Want something to do on Tuesday evening 7-8pm, why not join our quiz night, join a team & test your general knowledge! Let us know if you are interested. GAME ON!

ZOOM FRIDAY CLUB INFANT + JUNIORS 6.15-7.30

This is our kids club for children. We sing and dance, play games, learn the books of the bible in a fun rhyme and have a bible story (YR R - YR 6)

ZOOM SUNDAY MORNING SERVICE 10.30-12.00

This includes singing, communion, sharing what's been going on in our lives, a sermon (a talk) and praying. (We pray for each other and the community. Got anything you want prayer for? Let Rhoda know.)

ZOOM FRIDAY CLUB SENIORS 7.45-9.30

This is our club for youth. We chat, play games, discuss the hard questions of life and God. (YR 7- YR 11)

HELP! I NEED SOMEBODY

We've been helping people in the community since lock down. Do you, or anyone you know, need help? We can:

'Help, help me'
Collect prescriptions

'Fast Food, Feed me Fast'
We're connected with
'The Community Food Link'

'I'm so bored' Join our
community Quiz night

'Food glorious food...'
Help with your food shop

'A little more conversation'
Chat on the phone

If you want to know any more about the above, please contact Rhoda on rhodamcf@outlook.com or 07415685049 (First quiz question will be name the songs found on this page)

MARNELL BOWLING CLUB

We are looking for new members, come and meet us:



- Bowlers of all ages and abilities;
- Outside Bowling (April - September weather permitting);
- Short Mat Indoor bowling (October - April);
- Refreshments available, fully stocked bar at club prices;
- Leagues on Monday, Wednesday, Thursday and club friendlies;
- 80% off for first year subs, only £12 first year, £60 each year after;
- Qualified Coaching available; and
- Make new friends.

Practice Outdoor Tuesday 6-9pm; Indoor Monday 7-9pm; Wednesday 2-4pm; and 7-9pm. Come along and have a go (All equipment can be provided).



Where are we?

Behind Popley Fields Community Centre.
(next to Basingstoke Air Scouts Hall and Nursery).

For further details contact John: **01256 411469.**

or Club Captain Sue: **01256 326147.**

or visit Marnell Bowls Club Website.

www.marnellbowlingclub.co.uk

@MarnellBowlsClub

BUdate on Behalf of Chineham Medical Practice Patient Participation Group.

COVID 19 has presented us with a substantial challenge over the past 2 months and the Chineham Medical Practice wanted to thank patients for their support, patience and resilience during this time. Out of necessity the way care for patients has changed in order to keep both patients and staff safe. This has meant all initial contacts are now made through telephone or video call.

The practice has seen that a lot of the work people would previously attended the practice for, we can be delivered safely and effectively via phone and more recently video consultation. In the future in the next phase of how we manage COVID 19, the normal care provided for patients will start to resume, although how this is safely and efficiently achieved is still be considered.

If you haven't already and need advice, why not try using our online consultation, e – consult? This is accessible through the practice web page. You can use this to ask questions about new or existing problems and can submit helpful information about long term conditions like blood pressure monitoring. The practice aims to respond with these in 48 hours and often this will be via a text message. Text messages are playing an increasingly valuable role in both in giving information or advice and also helping GPs understand your issues better. Pictures can now be sent in reply which has helped manage things remotely. Similarly, utilising video consultations regularly have been an effective way of managing many conditions and allows you to remain in the comfort and safety of your own home. There may still be times when you need to physically see a doctor / nurse / health care assistant and this can be done at the practice with full protective equipment.

It's difficult to predict how long these arrangements will be necessary. Your support and help to deliver the safest and most effective service is appreciated. Thank you.

If you are interested in finding out more about joining the patient participation group please contact: Karen Nicholls Tel: 01256 479244.

Your Local NHS Organisations

Your local NHS organisations have been working together through the Covid-19 emergency to ensure that we can still deliver care to everyone that needs it, whatever illness or condition they may have. Treating people with Covid-19 is really important, but mental health problems, cancer, heart disease and all the other conditions have not gone away while we deal with it.

Please know that you can still contact your GP for help – visit your practice's website to use the easy e-consult service, or give them a call if you're not online. Only visit in person if you're asked to. So that we can keep everyone safe, if you have to see a doctor face-to-face we might ask you to go to a different practice than your usual one, but don't worry, you'll still be able to get the help you need.

If you have appointments for things like cancer or antenatal screenings it's really important that you keep them. We wouldn't ask you to come in if it wasn't safe. If ever you need help and you're not sure what to do, visit 111.nhs.uk, or call NHS 111. If there's an emergency don't hesitate to visit A&E or dial 999.



Lions Club of Basingstoke

We've been joined by Bill Lenihan. He got talking to Ann Vicars at our World Sight Day stall in the Malls and she persuaded him to join us at a dinner meeting at The Hatch. It was the usual rowdy, good-humored affair and he was pretty much sold on us. Ann finished him off with her usual rack and steam hammer approach and he has just volunteered to take on our most important role, Chairman of Fundraising. Whoopee!!

But life is full of ups and downs and Barry Morgan (Mr. Fixit) has felt obliged to stand down due to ill health after 23 years as a Lion. (The one is not a direct result of the other!!!) At one time or another he has voluntarily taken on nearly every role in the Club, and always delivered. But one of the nice things about our departing members is that they all opt for the umbilical cord of our distribution list. So, when they get the minutes and recognize that we have a problem they often weigh in by helping to organize and take part in activities such as Easter Egg raffles, tinshakes etc. There is an old saying that no good deed goes unpunished. So it actually pays to recruit masochistic members. On which subject I hope to have further good news next month.

The value of the Fleet Club's IT renovation project cannot be overstated. One of our volunteers had the good fortune to deliver a particularly large screen and keyboard to a family with a disabled child. The reaction was apparently an absolute joy to behold – the sort of outcome that really makes you feel it's all worthwhile.

We also became aware that one of the charities which we have helped in the past was running into a short-term funding shortfall to operate its foodbank. We stepped in with a loan of £1000 to cover 2 days operating costs.

The Basingstoke Voluntary Association (BVA) organized bunches of flowers to be delivered to carers. They needed drivers to deliver them. Quiz question: "Which member of the Club made the deliveries to a village just outside Basingstoke? Hint: a character once played by Doris Day – no! not Calamity Jane, (however appropriate that might be), the other sharpshooter!" But during the deliveries our one was spotted "loitering" on a corner causing several motorists to slow down in a suggestive manner. (Cop speak!).

Stop Press: We just received a very nice thank you letter from the CEO of our local NHS Trust in respect of the additional hand creams we supplied to the hospital. Isn't that nice!

You too can help to make a difference to the lives of others by joining us via

Philip Wilson

Health Information Point (HiP)

Here to help you during the pandemic

Although we are currently closed to the public, you can still access our free and confidential health information service.

Are you interested in:

- ✓ Improving your health and wellbeing?
- ✓ Managing long-term health conditions?
- ✓ Finding out more about treatments or tests?
- ✓ Getting details of local support groups?
- ✓ Support for yourself as a carer?



We offer:

- ✓ Signposting to a wide range of high quality up to date publications and websites.
- ✓ Details of relevant local and national resources.

Contact us

Telephone: 01256 313969 (voicemail)

Email: health.info@hhft.nhs.uk

Andover War Memorial Hospital
 Basingstoke and North Hampshire Hospital
 Royal Hampshire County Hospital



Basingstoke police have received multiple reports in recent weeks that catalytic converters are being stolen from people's cars in the Basingstoke area. As part of efforts to help tackle this spate of thefts we would like to share some important crime prevention advice with you, so that you have a better awareness of how you may protect your belongings.

In recent years, the price of the metals used in catalytic converters has soared, and as a result catalytic converters are highly attractive to thieves because they can provide a substantial return for just a few minutes' work.

Transit/Sprinter vans and other vehicles with high clearance are especially vulnerable.

The following recommendations can help deter offenders:

- Consider security lighting.
- If your catalytic converter is "bolted on", you can have the bolts welded shut. Ask a local garage.
- Consider the installation of CCTV to protect your vehicle.
- Where possible, park in a garage / secure / well populated area.
- Alternatively, park in a location that restricts access underneath your vehicle.
- Try 'defensive parking' against a wall, or if there are multiple vehicles, park the low clearance vehicles to block the high clearance vehicles. This will help obstruct access underneath.
- Identify/etch your converter with a unique serial number (see 'Retainagroup' website) and advertise that the vehicle has been protected (window stickers).
- You can even purchase a 'cage clamp' which is a cage device that locks in around the converter to make it more difficult to remove.
- If you see someone acting suspiciously under a vehicle, report it to the Police. Obtain as much information as possible, including any vehicle registrations.

Regards,

PCSO Holt, collar no. 16552, Basingstoke Police.



Celebrating the foodie life, based in Basingstoke.
Simple Recipes | Food Inspiration | Food Blogs |
Local Produce
www.thehomecooking.com
Follow on Facebook & Instagram
[@thehomecooking](https://www.instagram.com/thehomecooking)

It's amazing how common it is in our house to find ourselves without any bread, so I often have to get creative when it comes to lunch or brunch. I discovered these super easy flatbread a few years ago now, I think Jamie Oliver might have been the first person I saw making them. You'll find recipes all over the internet for them, many of which are over complicated for very little reason. My recipe is more a ratio, to ensure that you get a well shaped flatbread which is perfectly fluffy inside and delightfully crisp on the outside every single time. My favourite things about these simple flatbreads is that they are quick, ready in under 10 minutes. You'll be amazed by just how versatile they are too, you can make use of them for breakfast, lunch and dinner. Pretty much any topping works but we have our favourites so I'll share some of those with you however I'd encourage you to get creative, utilise what you have in or stick to classic combos. One thing I can guarantee though is that you'll have a great meal regardless!

Prep Time – 5 minutes

Cook Time – 5 minutes

Serves – 2

Ingredients:

- 4 heaped tbsp spoons Self-Raising Flour
- 3 heaped tbsp Plain Yogurt
- 2 tsp Olive Oil

Method:

- Combine all of the ingredients into a large mixing bowl.
- Mix together using a fork until the ingredients come together to form a ball of dough.
- Lightly flour a work surface and your hands.
- Split the dough into two equal pieces.
- Place a large frying pan over a high heat.
- Place the dough onto the floured surface and pat down, keep patting it and pushing it to flatten it out. Be sure to keep flipping it over so that it doesn't stick to the surface, add a little more flour if needed.

- Once the dough is about 6mm thick (two £1 coins) and nicely formed add it to the dry pan.
- Allow to cook on one side for 2-3 minutes, until puffed up, golden and lightly charred in places.
- Flip over and cook for a further 2-3 minutes again until golden and lightly charred in places.
- Remove from the pan and repeat steps 6-9 for the remaining dough.

Hints & Tips:

- The dough should be should nice and soft to the touch but not sticky, if yours is sticky add some extra flour, a tsp at a time so that you don't risk drying it out.
- It doesn't matter if your flatbread is a little misshaped, it'll still taste good. You'll get better with practise.
- You can add a season of salt and pepper to the dough mix if you like, or a little of your favourite herbs or spices.
- Using a fork to mix to dough means you won't get your hands all messy.
- When you place the dough into the pan, you can flatten and shape a little more, just be careful.
- Full fat yogurt does work best for this but you can use low fat, you might find that you need to add a little more olive oil though.
- You can tell when to flip them over by watching the edge, the flatbread should puff up and the edge will change colour slightly as it cooks. You'll notice the bottom half of the edge cooking so keep a close eye.

Serving Suggestion - Smashed Avo & Eggs

Halve your avocado, scoop the flesh into bowl and mash it all up. Add 1/4 of a red onion (finely chopped), 1 salad tomato (deseeded and finely chopped) and grate in 1 small clove of garlic (optional). Season with salt and pepper, a dash of Tabasco sauce and a sprinkle of chilli flakes. Mix it all together and pile on to your flatbread, top with 1 & 1/2 soft(ish) boiled eggs (boiled for 6 1/2 minutes then placed into an ice bath). Combine a little yogurt with some sort of chilli sauce (sriracha is my preference) and drizzle over the top before serving.

Find more serving suggestions for this recipe at
www.thehomecooking.com/three-ingredient-flatbread



Visit www.thehomecooking.com and subscribe for the latest recipes & blogs about food and local businesses delivered direct to your inbox. [No Spam Emails]