

FASTFARE


Your Local Convenience Store

Open seven days a week

Sun-Thurs 8.30am - 9pm

Fri-Sat 8.30am - 9.30pm

Abbey Road (Shops)

 (01256) 323679

Grocery | Off Licence | Dry Cleaning | Fresh Fruit & Vegetables | Wool | Fresh Sandwiches | Pies
Also Ethnic Food Jamaican & Indian Spices

We Accept Milk Tokens

Recharge your Gas Card, Electric Key, Northern Electric, BT Bills and even your TV Licence



Phone cards available for

Pay as you talk, Mercury One to One, BT Cellnet & Orange

Coke £1.19p 2 Litre , Coke Cans 29p.
While Stocks Last

Come into the store and
see our many special offers

Faxing (£1.50 inland)

Photocopying (7p per A4 page)

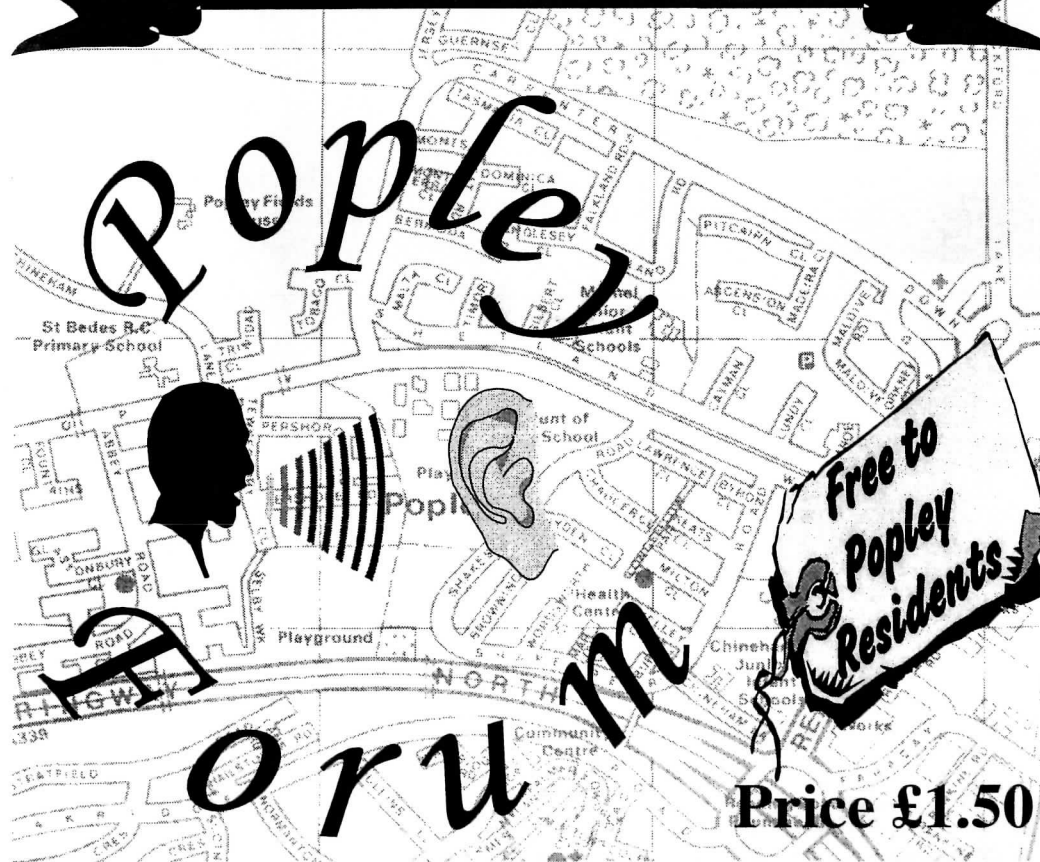


POPLEY MATTERS

September to November 2001

Volume 3 Issue 14

FULL OF LOCAL NEWS AND VIEWS





News from the Boys Brigade

As I write this, we are just about to go off to Company Section Annual Summer Camp. By the time you read this we should be back.

Again, lots of events and activities have been held during the summer months starting with some of the members going to the brigade headquarters at Hemel Hempstead for a seniors weekend of

Christian Fellowship and activities, this was held in the second week of May.

June saw the company section Boys running the Summer Fete at the Watership Activity Centre at Old Burghclere. The Centre is run by Popleys Boys Brigade and is a hall with a camp site. Like all things with the Boys Brigade no funds or grants are ever available so the Centre has to be operated on a voluntary and fund raising system. The staff and boys cut the grass, clean the Centre and look after its general welfare Over 250 hours of voluntary work has already been completed this year.

July, saw us at the Marnel School Explorers Fete, with a variety of fete type games. The Anchor Boys (aged 6 to 8 years held their annual Fun Day at the Old Burghclere Centre. The Junior section (aged 8 to 10 ½) held their annual summer weekend at Walkford, nr Highcliff in Dorset, where a wonderful time was spent Playing games, going to the beach, arts, crafts and a trip ski-bobbing. The weather was great, and the boys returned home tired but full of all the things they had done.

We restart our new session on Monday September 3rd with a few changes. After 26 years as Captain of Popley Boys Brigade Dave Phillips is to retire. Our new captain will be Mark Hood. Mark has come right through the company, as have a number of our officers. Dave Phillips will still be around for a while, organising the fund raising and visiting schools etc.

For further information to join see our main advert.

EDITORS NOTE:EDITORS NOTE:EDITORS NOTE:

I wish Dave a great retirement from the Boys Brigade but having known Dave for nearly 25 years from when my two sons were in the Boys Brigade. I remember many church parades and helping with fund raising. I cant see Dave taking it easy the boot sales will keep him busy. Dave has been an exemplary role model for the boys of Popley and surrounding areas to follow. You will be missed greatly.

Message From the Editor

The Popley Partnership results from Market Research have come in 712 people sent in their blue cards that were inserted in the Popley Matters, followed by 550 face-to-face interviews. There have been meetings, exhibition, workshops involving residents and yet more to come. The idea is to find out the problems and identify solutions to improve Popley.

The pinch points have slowed down the traffic at the most dangerous points in Abbey Road but still some people are parking right up to the pinch points and it makes it difficult to have a clear view, surely the safety of adults and children come before being able to park almost on their doorstep.

We hope to have a special edition of Popley Matters next year as it will be ten years since the first one was published and it will be five years since it was restarted, it does not seem possible that the team who present the Popley Matters have managed to publish at least four magazines a year, many hours goes into producing this magazine and there are a group of dedicated residents who deliver them through all weathers. All the work on the Popley Matters is done voluntarily, thanks to everyone that helps. We are always glad to have letters, articles, advertisements and deliverers, it all goes to make a magazine that lots of people like to read. If you have any ideas to improve Popley Matters then write to me at 405 Abbey Road or phone 819924.

I discovered a web site www.friendsreunited.co.uk and I have traced girls I was at school with forty years ago, if you have any other useful sites let me know and if they are appropriate I will print them in future editions.

It is good to see how much activity there is in Popley for the youth with reports from Scouts, Guides, Brownies and last time Junction 6 but we need more people who will volunteer to start activities like football, craft, and mechanical for the vast youth of Popley that are just bored. Are there any genuine offers out there?

We are currently looking at the three tenders to install the CCTV at Abbey Road shops thanks to a grant from Basingstoke and Deane Borough Council and George Hood who is the portfolio holder for Community Safety. The CCTV should be installed very soon.

We say goodbye to Patricia Langley (business manager at John Hunt School. Pat is moving on to pastures new. Pat has worked very hard in Popley for the Forum and Popley Festival I hope we see her at least visiting us in the future. Good Luck in your new job.

As we go into the autumn/winter months please look out for your neighbours, the elderly and more vulnerable people.

Jane Frankum (Editor)

CHILD HEALTH DIRECTORATE
HOUSEKEEPING ASSISTANTS
FULL TIME, PART TIME OR FLEXIBLE HOURS
AVERAGE WEEKLY EARNINGS £192

Need extra money for Christmas? We are looking for staff willing to work flexibly for our Child Health Housekeeping Team based on G Floor at the North Hampshire Hospital. Duties include all aspects of cleaning and hotel services to the Children's and Neonatal Unit.

We are very flexible with a variety of shift patterns available, ranging from bank to part time, any day, or alternatively working on a full time basis. You must be reliable, and adaptable and at least 17 years old.

So, if you would like to join our friendly team why not give Lois Kopp, Senior Housekeeper, a call on 01256 473202 (ask switchboard to bleep 1188) between 7:30 am and 2:30 pm, or alternatively contact the Personnel Department to find out further details or to arrange an informal visit.

For an application form and job profile please contact the Personnel Department, Child Health, G Floor, North Hampshire Hospital, Basingstoke, Hants, RG24 9NA (Tel: 01256 314951) quoting ref: PM/168/CH

The Trust operates a no smoking policy and is committed to Equal Opportunities in Employment.

Countywide Travel

Specialists in group travel countywide and countrywide!
12 to 53 seater coaches for hire

for free advice and quotations call 780079 or fax 781742

We also operate an extensive day excursion programme to many places of interest throughout the year with local Popley pick ups. There are also a limited number of weekend breaks and all week holiday tours available.

**Full details and bookings available at the
tourist information centre, Willis museum.**

Telephone 817618

UNDER NEW MANAGEMENT

Special Offer*
Free bottle of soft
drink on
orders over £15

Reemin's Indian Takeaway
3 Longfellow Parade
Popley Poets
Basingstoke
Hampshire



FREE HOME DELIVERY
WITH ORDERS OVER £10

10% Discount for all collections over £15

(* This offer applies Monday-Thursday only)

01256 328822/352565

Opening times: 5-00pm to 11-00pm

7 Days a week (including Bank Holidays)



ABBEY VIEW FUNERAL SERVICES



Funeral arrangements are personal; at the time of bereavement your wishes and those of your loved ones are paramount. At Abbey View we never forget this and our friendly professional staff are dedicated to advising and guiding you to plan the service of your choice.

We are an Independent Family Funeral Directors and Monumental Masons offering a 24 Hour Personal, Caring Service, Golden Charter pre-payment plans and Individually Designed Memorials made in Basingstoke by B & V Masonry. Funerals can be conducted in any area and arrangements made at our offices or in your own home.

Please do not hesitate to contact us for advice and assistance at any time:-

We are here when you need us.



Basingstoke:	01256 851231	Shoehanger Barn Kingsclere Road (A339)
Hook:	01256 761717	7 London Road Hook
Thatcham:	01635 860866	59 Station Road Thatcham

Letters to The Editor

Editor; We had no letters this edition so I am using this space to ask all the residents to get more involved in their neighbourhood. I have lived in Popley for over thirty years and I am very happy here. I got involved in many community schemes because I wanted the place I live to be a place to be proud of and in the main I am. I do feel we have lost some of the community spirit that Popley is so well known for. We used to go out as families and have picnics on the greens outside our houses, we took turns in baby sitting and watched our children grow up together and if there was any kind of problem an adult was always near. Of course our children were not always angels and most of the children misbehaved at times but you knew you were not going to get away with much because every one knew each other and mum or dad would be told.

Litter was not the problem it is now partly because every thing is packaged differently. There used to be campaigns I remember the "Keep Britain Tidy" one and there were advertisements on the tele and children were taught it at school.

We are all in agreement that a better place for every one is what we the Forum and residents are striving for but the agencies cant do it all for us, we can do most of it among ourselves. There are many ways to help you can report broken glass, dumped cars and rubbish left to the council on 845474. Any big bulky items can be taken away by the council on the same number. Garden rubbish goes in green sacks bought

from the council at 85p and they will then collect it.

Noisy motorbikes and illegal riding of them needs to be reported to the police and the environment department at the council they have other measures they can use.

If you see someone vandalising or breaking the law phone the crime watchers number 0800 555111 There have been increasing small and serious acts of arson in Popley lately it is better to catch someone when they start than to leave it till they set a bigger or more dangerous.

Please send your letters to :
The Editor, Popley Matters Melrose Hall,
Abbey Rd, Basingstoke. RG24 9ES



The Adult Education Programme for the Autumn Term 2001 organised by Basingstoke College of Technology is now available. You can obtain your copy from your local supermarket, library, the hospital, the Information Centre in the Town Centre and various other outlets and also by telephoning the Information Office at BCOT on 01256 306484. We run a large and varied programme in nine different centres including BCOT, so there is a course near you that you may be interested in. Topics range from IT to art and craft, carpentry and motor vehicle, holistic therapies, exercise routines and many more besides. To enrol or obtain more information on a particular course please call the above number or pop in to BCOT



MELROSE HALL

Thanks to all of you who turned up for the AGM on Monday 25th June, Jenny Bailey was elected as Chair with Iris King as Vice Chair, Sue King Treasurer, Kate Lomas Secretary. Other members of the committee are Phillip and Eve Keeble, Doris Saitch, Ann Souilah, Bert Bishop, Louise Tuck, Archie Martin, Bobbie Kirk, Sue Toomer and Iris Fogg. A big thanks to Pat Horigan for chairing the meeting and to Debbie Dainton and Richard King for all their work over the past year, which enables the Centre to run smoothly.

PLEASE NOTE THE CHANGES TO THE WHAT'S ON AT MELROSE HALL

Monday

10am-1pm Coffee morning
1st Monday of the month snacks available also our book borrowing club

Tuesday

2pm-4pm Bingo Club
3.30pm-9pm Petite School of Dance

Wednesday

9.30am-11.30am Popley Little People (Parent Toddler Group)
12pm-2pm Popley Oasis (Lunchtime drop in)
Look on the notice board for more information on this new venture

Thursday

10am-1pm Coffee Morning

Friday

9.30am-2.30pm Loddon Alliance (Network Club)
6.30pm-7.45pm Melrose Christian Fellowship Junior Youth Group
8pm-9pm Melrose Christian Fellowship Senior Youth Group

Saturday

9.30am-12.30pm Petite School of Dance

Sunday

11am-1pm Melrose Christian Fellowship
6.30pm-8pm Melrose Christian Fellowship

MELROSE HALL IS AVAILABLE FOR PRIVATE HIRE, WEDDINGS BIRTHDAYS, REHEARSALS ETC. TEL 420676



SCOUT TROOP

Basingstoke Air Scout Troop has met throughout the holidays this year making the most of their new HQ in Base 2000. Activities included the model aeroplanes, spaghetti pioneering, canoeing and project skills such as building and sailing a raft. Everyone got wet but the raft stayed afloat!

The troop joined in the County Summer Camp at Ferny Crofts in the New Forest this year to develop their camping skills. As well as learning traditional camping skills such as fire lighting, gadgets, food storage and hygiene at camp, the packed activity programme also included pushball, biking, Frisbee, golf, punch ball, climbing and Karting. Not to mention the survival hikes and an assault course which taxed many a member. The leaders too had fun planning a wild game involving pioneering skills and 'commando type' raids on other patrols to gain all the equipment and score points. With over two hundred on site it was all quite an adventure!

Future plans include sleepovers, gliding, first aid and kite-making so why not come along and join in the fun? Membership is open to boys and girls over 10 1/2 years to 15 1/2 years and there are exciting plans ahead for the 14 to 18 age group with the development of the new Explorer Scout section. Just turn up at Base 2000 on a Monday evening between 7 and 9p.m. or contact either Apache on 01256 410559 or Hercules on 07787 340313.

BEAVER SCOUT COLONY

Help save our colony please.

Leaders difficulties are once again straining the resources of the Air Scout Beaver Colony which has sixteen members but only one trained leader. More help is needed if the colony is to continue its active programme and remain open. Meetings take place on Tuesday evenings from 5.30 p.m. to 7 p.m.

Enquiries to Group Scout Leader, Jan Saunders on (01256) 410514.

Beaver scouts enjoy a varied and very active programme of fun and friends with plenty of games and lots of messy making things. They're planning to take part in the District Fun Gala at the end of October providing the leader problem can be resolved.

Future plans for Popley Cub Scouts

Starting meetings again in September the group has plans for a visit to Basingstoke Fire Station; hopefully the fire fighters will be able to visit us at our new headquarters later in the year. Quite a few of the Cubs who were at the Watership Down Experience showed an interest in putting on shows and we are going to develop this theme and work towards some entertainment badges. Joint visits to other packs are being arranged, Halloween parties are always fun, and the swimming gala is due this term.

John Hunt of Everest School

Popley Way Basingstoke Hampshire RG21 9AB

For more information or to enrol telephone 01256 306484

Course Name	Length	Day/Time	Start	Tuition Date	Exam/ Mats Reg	Course Code
PRACTICAL CRAFTS (NCFE 7880) Cake Decorating Stage 1	30 weeks	Tue	1900-2100	18.09.01 £75.00	£23.00	RYL25
LANGUAGES (NCFE 9500) Dutch Stage 1	30 weeks	Wed	1900-2100	19.09.01 £75.00	£25.00	RYL30
Spanish Stage 2	30 weeks	Tue	1900-2100	18.09.01 £75.00	£25.00	RYL14
Italian Stage 1	30 weeks	Thur	1900-2100	20.09.01 £75.00	£25.00	RYL20
Portuguese Stage 1	30 weeks	Wed	1900-2100	19.09.01 £75.00	£25.00	RYL33
BUSINESS AND IT PC's For Absolute Beginners	10 weeks	Tue	1900-2100	18.09.01 £45.00		XLA120
DANCE, DRAMA & MUSIC Rock & Roll Beginners	10 weeks	Mon	1900-2000	17.09.01 £24.00		XLD111
FITNESS, SPORT, HEALTH & BEAUTY Tae Kwon Do Introduction	10 weeks	Fri	1830-1930	21.09.01 £24.00		XLD107
Kick Aerobics	10 weeks	Fri	1930-2030	21.09.01 £24.00		XLD106
GENERAL INTEREST Bridge Advanced	10 weeks	Tue	1900-2100	18.09.01 £45.00		XLD104
How To Be a Smarter Investor	5 weeks	Mon	1900-2100	17.09.01 £24.00		XLA121
Babysitting-First Aid Awareness Training (students must be 14 years old)	10 weeks (14-18yrs)	Fri	1900-2100	21.09.01 £45.00	£24.00	XLF130
Weather Forecasting & Climate Change	3 weeks	Wed	1830-2130	10.10.01 £22.00		XLC104
SATURDAY WORKSHOPS Nail Art & Manicure	1 day	Sat	1000-1300	10.11.01 £15.00		XLE123
Have Fun with Publisher-Invites, Newsletters	1 day	Sat	1000-1500	10.11.01 £24.00		XLA122
Basic Photography-Know Your Camera	1 day	Sat	1000-1500	20.10.01 £24.00		XLE124

No Bed of Roses

I moved to Basingstoke in 1992 shortly after which my husband and I split up. I had to give up work to look after my children. I had to answer all the difficult questions my children asked about why Daddy wasn't with us any more. I had to deal with solicitors, DSS, Housing Benefit...all at a time when the thing I needed most was time to cry and someone to tell me everything would be alright. I had lost my network of friends, I had to cope with the children alone, worried about where the money was coming from for the next loaf of bread, and be there for my children when they were upset. The bills still came in, the housework still needed doing, the children still needed feeding....all at a time when the thing I needed most was time to cry and someone to tell me everything would be alright. I was lucky. I had a friend that knew about Wel-Care. If it hadn't been for Wel-Care I know I wouldn't be where I am now. With their support, I have been to college and gained valuable qualifications (I graduated in July), and rebuilt my self-esteem. Wel-Care have been a family to me when I needed them. I have been pointed in the right direction for help and advice....but more importantly - I have had the time to cry, and a shoulder to do that crying on. I know I have friends that I can call on whenever things get tough. I get the chance to offload, to share my good and bad experiences, and to socialise. Most lone parents don't choose to be on their own, many of us divorced, and some widowed. The most important thing to all of us is our family, and in many instances a relationship breakdown means we lose friends and family as well as partners. Re-building your life takes time and a lot of determination. But it is made so much easier if you have the support of family and friends. These days I spend more time sharing the good experiences, and being that shoulder for someone else to cry on. I won't pretend life is a bed of roses, but I know I have come a long way since I was first introduced to Wel-Care. I would like to thank everyone at Wel-Care for their continued support and encouragement, and apologise for the wet shoulders!

Wel-Care organise regular support groups in various areas of Basingstoke, and run a drop-in session once a week at the office in Chute House. If you are a lone parent in need of support, or just want more information, then contact Helen or Pam on Basingstoke 473350. They also belong to a furniture scheme where good unwanted furniture can be given a new home. If you have any unwanted furniture that is in good condition, please contact the office on the number above.

Julie Johnson (Chair of Wel-Care, Basingstoke)

Treasure Island Play Group

At

Popley Fields

Community Centre

Mon-Fri 9:30am - 12:00pm

Mon & Thurs 12:30pm - 3:00pm

Parents & Toddler Group

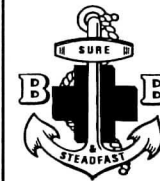
For More Information

Phone



 414014

Registered Charity No. 282848



The Boys' Brigade

6th Basingstoke (Popley) coy.

Anchor Boys Aged 5½yrs-8yrs

Monday Night 6:15pm to 7:15pm

ROSLA BLOCK ROOM R14

Junior Section Aged 8yrs-10½yrs

Monday Night 6:15pm to 7:30pm

Main School Gym


Company Section Aged 10½yrs-18yrs

Monday Night 7-30pm to 9-30pm

ROSLA BLOCK ROOM R14

All Sections Meet at John Hunt School

Answer Phone for Information

 323564

PRINT WISE

- Quality Printing •
- Competitive Prices •
- Artwork & Design •
- Fast Delivery •



Tel/Fax: 01256 33 22 02

Councillors Page

There will be two exhibitions on the improvements to Abbey Road Shopping area and the one at Madeira September 3rd. The first will be in the trailer at Madeira Close, close to the shops from 4-30 to 7-30pm. Abbey Roads exhibition will be the next day same times and near the shops. Come along and talk to the designers about your views and they can answer any questions you have. The designs are to make the area look much better and design out some of the problems caused around these areas.

The stones at the front of Abbey road shops have been removed and the area grassed as people were using them as missiles to throw at the notice board and cars. This was a stupid thing to do because people could have been seriously hurt.

The play areas have featured a lot in the press lately and we had a meeting with some residents that live near Bermuda Close. It was a very constructive meeting and of course quite lively. Two children came and gave their views. The lack of facilities for the youth also came up and some of the residents said they may be willing to start up some activities like football and bike maintenance. The one thing we are short of all over the borough is volunteers to work with the youths. Rob Donnelly, Popley Councillor and Leader of the Council offered to walk around the area to see where the residents were concerned about the landscaping.

The Popley Forum will be meeting at Madeira Hall at 7-30 on September 26th. I hope that you come along the main item will be the Popley Partnerships and where we are with the consultation. The Forum has been meeting regularly in all three halls in turn. This is your opportunity to change things in Popley and more residents would be welcome, so often I hear people saying they haven't heard about this or that but they don't want to come to a meeting to find out or pass their opinions.

There are articles about the Popley Partnerships elsewhere in the magazine so I wont go into details here but just to say that we have had some good meetings and the agencies have been impressed with the ideas for improvements in Popley.

The traffic calming in Abbey Road is have a good effect near the pinch points where most of the previous accidents have been but still some drivers insist on parking so close it is hard to clearly see the road, they just don't want to walk a few more yards to their houses and adults and children run the risk of being involved in an accident because of it. Come on there are just a few of you and you should not be putting people at risk especially the children and vulnerable people.

If you see rubbish or broken glass ring 845474 and ask for it to be removed it is up to us all to look after our estate.

The Apollo (used to be Ringway) has completed its new building and it looks so much better.

Please could dog owners poop a scoop your dogs mess I know the vast majority of you do but those few that don't even when asked are being very selfish. If you see people doing this on a regular basis and taking their dog out at about the same time please ring the Dog Warden on 845474 at let them deal with it, the owners can be fined.

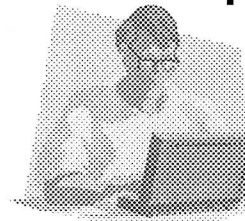
**JOIN OUR NEW CLASSES AT POPLEY
FIELDS COMMUNITY CENTRE**

**FREE CITY & GUILDS
INFORMATION
TECHNOLOGY COURSES**

**MONDAY TO FRIDAY
9AM-12 NOON**

&

12.30PM-3.30PM



**CITY & GUILDS INFORMATION
TECHNOLOGY COURSE**

THURSDAY EVENINGS 7PM-9.30PM

**FOR FURTHER INFORMATION
OR TO ENROL ON ANY OF THE
ABOVE COURSES**

**PLEASE TELEPHONE 01256 473698
RICHARD ALDWORTH COMMUNITY
SCHOOL**

**LEARN NEW SKILLS OR BRUSH UP
ON EXISTING ONES**

Hampshire Caterers

WOULD YOU LIKE TO HELP
YOUR LOCAL COMMUNITY?

Hampshire Caterers could have the perfect job for you!
Working to provide tasty and nutritious school meals
for children in your local area.

**GOOD HOURLY RATES:
STARTING FROM £4.79 per hour**

From 7.5 hours per week, over the lunchtime period

Benefits include:

- ❖ Meal
- ❖ Uniform Provided
- ❖ Work term-time only
- ❖ Holiday Entitlement
- ❖ Pension Scheme
- ❖ Full training provided

Interested? We would like to hear from you!

For an application form and job profile, please contact
Hampshire Caterers' (24 hour answering service) on
023 8062 9825 or our Personnel Department
on 023 8062 9388.



In promoting equal opportunities, we would welcome
applications from all sections of the community.



1ST POPLEY EVEREST SCOUT GROUP

All sections of the group have been extremely active over the past term. In June 16 Beavers took part in a sleepover at Crabtree Plantation. The theme of the sleepover was the Jungle Book so activities included making jungle drums, a snake hunt, eating breakfast in the jungle and singing around the campfire. The Beavers went home at midday on the Sunday, very tired but most of them wanted to repeat the experience again the next night!!

The Beavers, Cubs and Scouts have been learning tracking in Carpenters Down Woods. The Scouts have been learning pioneering and all sections enjoyed a water night where the object of the meeting appeared to be just how wet you could get the Scout leaders!!!

In July we were invited to the Hampshire Constabulary "Getting it Right" pantomime at the Anvil Theatre. The pantomime was called 'Greenbeard the Pirate' and was enjoyed by all the children (and leaders). We all enjoyed the end of term family BBQ and are now looking forward to the summer break.

If anyone would like more information about the above group please contact Andrew Sumner on 01256 355671.

Meeting times at St Gabriels Church Hall

BEAVERS (6 – 8 yrs)	5pm – 6.15pm Tuesday
CUBS (8 – 10 1/2 yrs)	6.30pm – 8pm Tuesday
SCOUTS (10 1/2 – 16 yrs)	6.30pm - 9pm Tuesday

Sizzling summer at the Haymarket Box Office

A sizzling start at the Haymarket Theatre as subscription sales break records.

With the new brochure out for the Haymarket Theatre, subscription's to the season have been flooding in. In the 3 weeks of the packages going on sale, box office records have beaten all previous sales in such a short period of time, as the 750 subscription package was sold to Maggie Snow this week.

Maggie from Basingstoke is a very regular face at the Haymarket, and has been for the last nearly 20 years. Although she suffers from Cerebral Palsy, Maggie is one first to offer her services to the theatre, and attends all the functions on offer with her subscriber package.

We asked Maggie why she subscribed each year, her reply was "It gives me something to look forward to, its such a great saving, and I just live for the time at the Haymarket".

You too can join Maggie as a subscriber, call 01256 465566 for details.



What's on at Popley Fields Centre

Mondays: Treasure Island Playgroup 9:30am-12noon and 12:30pm-3:00pm

Baton Twirlers 6:30pm-8:00pm

Wu Shu Kwan 8:00pm-10:00pm

Tuesdays: Treasure Island Playgroup 9:30am-12noon

C M A kick Boxing 6:30pm-8:00pm

Couples Line Dancing 8:15pm 9:45pm

Wednesdays: Treasure Island Playgroup 9:30am-12noon

Move Fitness 6:30pm-7:30pm

Line Dancing 8:00pm-10:00pm

Thursdays: Treasure Island Playgroup 9:30am-12noon and 12:30pm-3:00pm

Parent & Toddler Group 10:00am-11:30am

C M A kick Boxing 7:00pm-8:30pm

Popmobility 4:30pm-5:30pm 7-9 years

5:30pm-6:30pm 10-14 Years

Term Time Only

Fridays: Treasure Island Playgroup 9:30am-12noon

Youth Group 6:00pm-9:00pm

Family Planning 10:00am-11:30am

Free City & Guilds Information Technology Course's

Monday to Friday 9:00am-12noon

12:30pm-3:30pm

Tuesday 7-00pm-9-30pm

Sunday: New Testament Church 10:15am-12:15pm

**Watch the notice board for the date of the AGM
sometime in January**

**Also Available for Private Hire – Weddings, meetings,
Parties Phone Number 01256 414494**

Four Lanes Community Centre

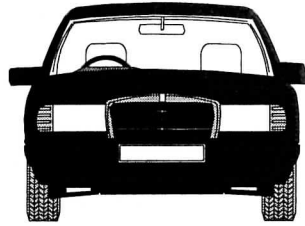
Hanmore Road Chineham Basingstoke Hampshire RG24 8PQ

For more information or to enrol telephone 01256 306484

Course Name	Length	Day/Time	Start	Tuition Exam/ Date	Mats Reg	Course Code
PRACTICAL CRAFTS (NCFE 7880)						
Needlecraft Stage 2	30 weeks	Mon	1200-1400	17.09.01 £75.00	£23.00	RYE65
LANGUAGES (NCFE 9500)						
German Stage 1	30 weeks	Wed	1900-2100	19.09.01 £75.00	£25.00	RYE70
Japanese Stage 1	30 weeks	Tue	1900-2100	18.09.01 £75.00	£25.00	RYE71
ART, DESIGN, CRAFTS & PHOTOGRAPHY						
Decorative Paint Techniques	10 weeks	Wed	1900-2100	19.09.01 £45.00		XEE100
Dressmaking	10 weeks	Wed	1000-1200	19.09.01 £45.00		XEE101
Dressmaking	10 weeks	Thur	1000-1200	20.09.01 £45.00		XEE112
Understanding Antiques & Collectables	6 weeks	Thur	1900-2100	20.09.01 £27.00		XEE103
Christmas Flowers	5 weeks	Tue	1900-2100	06.11.01 £24.00		XEE102
Tate Modern (Including Visit)	5 weeks	Wed	1000-1200	07.11.01 £24.00		XEC105
PERSONAL/PROFESSIONAL DEVELOPMENT						
Lip Reading	10 weeks	Wed	1330-1530	19.09.01 £20.00	Concessionary Fee	XEG120
SATURDAY WORKSHOPS						
Baby Massage	1 day	Sat	1000-1200	29.09.01 £8.00		XEE107
Indian Head Massage	1 day	Sat	1000-1500	20.10.01 £24.00		XEE108
Hand Felted Cushions	1 day	Sat	1000-1500	20.10.01 £24.00		XEE109
Garden Design Workshop	1 day	Sat	1000-1500	10.11.01 £24.00		XEE110
Back Massage	1 day	Sat	1000-15000	10.11.01 £24.00		XEE111

PASSENGER SERVICE

Male/Female
Drivers
All Airports



Local
and
Long
Distance

Travel Tokens Accepted

Gatwick from £40.00 Heathrow from £30.00

Reasonable Rates and known for our punctuality

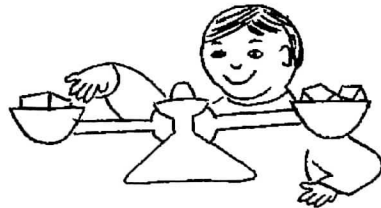


01256 818181

Merton Poppits Playgroup

Merton Infant School, Romsey Close, Popley.
Leader Mrs. T. Richards Tel. 351036

OFSTED approved...stimulating, friendly environment...quality of teaching is very good an example of a playgroup and school working together (Ofsted June 1999)



Visits to the playgroup are welcome. Please phone the above for times of sessions.

Ron the Gardner

25yrs Experience
Domestic & Commercial
Free Estimates Given
All Work Considered Within
Basingstoke Area
Tel. 410438

You are warmly invited to
WORSHIP WITH US

at

Popley Fields Community
Centre

Carpenters Down

Popley

Basingstoke

Sunday Morning

10:30 am to 12:00 noon

For more information phone:

Graham and Barbara on
(01256) 363692

New Testament Church of God



www.basingstoke-new-t.freeserve.co.uk

SELF-EMPLOYED

Accounts & Tax Return service
specially designed
for the self-employed.

Home visits arranged,
evenings/week-ends

Fixed "All-in" price
Why Pay More?
Avoid paying Inland Revenue
late penalties
Don't delay - Act now!

Telephone: 01256 850259
=====

STATE REGISTERED CHIROPODIST

• Sheena Brown is
available for Chiropody
treatment in the comfort
of your own home.



• Please telephone
(01256) 336853 for more
details or to make an
appointment.



POPLEY PARTNERSHIP UPDATE ON COMMUNITY CONSULTATION

The programme of community consultation in Popley is now well under way. This is a detailed consultation with Popley residents, aimed at identifying ways of improving the area and of addressing key problems. The programme of work is being managed on behalf of the Popley Partnership by Market Research UK.

What has happened so far?

We have now carried out two separate household surveys. The first was a postal survey, the second was a door to door survey of 550 households in Popley, selected at random. These surveys found that the key priorities for improving Popley are dealing with crime, providing better facilities for young people, providing better car parking and traffic management and cleaning up the Popley environment. The door to door survey also asked a wide range of questions about the people of Popley – did you know that one in four residents are aged under 15 years, and that there are over 2000 children aged under 16 in the area?

On 4 August, we held a Residents' Conference at Oakfern Housing Association, which some 25 interested residents attended, as well as members of the Popley Partnership. The conference was hard work for those attending, with the day spent in discussion groups and workshops, looking at key problems and trying to find solutions to these. A summary report of the outcome of the conference will be available shortly.

What happens next?

There are a number of other events that are taking place as part of this consultation programme, including a study visit to Stevenage, where they face similar problems with crime and the lack of youth facilities. The visit will look at approaches to these problems that might work in Popley. There are also further detailed discussion meetings looking at possible solutions to the key problems in the area, including transport and the environment, youth issues and dealing with crime.

The final Resident's Conference will be held on 8 September 2001. This will bring together residents and Popley Partnership members in developing an action plan for the area, drawing on the lessons learned from visits and other contacts, and setting out a range of ideas for improvement. This action plan will form the basis of bids for funding and other resources for the area in future, and provide a guide to further action.

If you want more details of the Conference on 8 September, 2001, if you want to get more involved in the consultation programme, or if you have any other queries, please contact Euan Ramsay of Market Research UK on 01264 861055.



Popley Forum Report

There was no Popley Forum in July as we were all working hard, with all the other agencies to get all the facts and questionnaires processed by Market Research. Once that was done there were meetings between Oakfern, Police, Council and your Popley Councillors. On the 4th of August we met with round 25 residents who had filled in the forms to say they wanted to be a part of the scheme to improve Popley. The meeting broken up into groups to discuss more fully the issues there were three main headings. We then came back together again and each group presented their findings. The same issues came out as our concerns and we were able to suggest some ways forward with some possible solutions. There will be a report in the next Popley Matters.

The next step is to look at other areas that have had similar problems and seeing at first hand how they have overcome them. The youth representatives will visit Southampton. There is a day at Stevenage, some residents are coming to see how Stevenage coped, like us in Basingstoke they were a new town in the sixties. **The next Popley Forum will be on September 26th 7-30 at Madeira Hall by the Barbican Pub** with Popley Partnership as the subject and all will be welcome.

Popley Two Residents Association

We were very sorry to lose our membership secretary George Williams. George has moved away to pastures new along with his good lady Rita. George was a good, loyal and reliable member for many years. We wish them both a long and happy retirement.

I notice that at long last moves are afoot to improve the environment around the Madeira Shops and the car parking area. An exhibition trailer will be near the shops on Monday 3rd September from 4-30 to 7-30 to show proposed designs so go along and voice your opinions.

Our bingo club outing this year was a tour of the Isle of Wight. It was a most enjoyable day especially as the weather was very kind to us. We are looking forward to our Halloween party night, we welcome anybody who wishes to come and join us.

Come along to our successful Bingo nights they are every Tuesday doors open at 7pm eyes down at 8pm.

The pre school, Marnel Explorers are continuing their success and their drawings are delightful as you look all around the hall well done to you all. Ron Rowe Chairman.