

FASTFARE PHARMACY

UNIT 3 ABBEY ROAD SHOPS POPLEY

BASINGSTOKE RG24 9ES TEL/FAX 01256 357 637

FREE PRESCRIPTION

COLLECTION AND DELIVERY SERVICE

If you use any of the surgeries listed:- Bermuda (Shakespeare House), Gillies Health Centre, Bramleys Grange, Church Grange, Chineham, East Barn, Hackwood Practice, Lytchpit, Marlowe (Shakespeare House), Overbridge, Southern, (Paddock Road) you can get your prescriptions filled at Fastfare Pharmacy.

There is also a free collect and deliver service for your prescriptions. We can also take your repeat prescription collect and deliver FREE OF CHARGE. NHS or Private.

WE OFFER WIDE RANGE OF OTHER SERVICES AND FACILITIES

- * We dispense NHS and Private prescriptions
- * Free pickup, collection and delivery of prescription(s)
- * Patient medication record system for help and service
- * Nomad System for patient needing help taking medication on time and regularly
- * Blood pressure testing and monitoring facility
- * Diabetic check up and monitoring facility
- * Cholesterol checking facility and help
- * Provision for private consultation area for patients
- * Help for safe disposal of unused /out dated medicine
- * Providing help and support to Nursing homes with patient care and medication requirements
- * Advice on medication and treatment of minor illness if need be by Pharmacist
 - * Pregnancy advice and morning after pill available
- * There is a stock of Motability Equipment for hire or purchase just ask and help us to help you. For further details ring ☎357637



Opening Hours

Mon-Fri 9am -7pm; Sat 9am-5pm

HELP US TO HELP YOU - PLEASE ASK

Don't forget Fastfare Your Local Convenience Shop

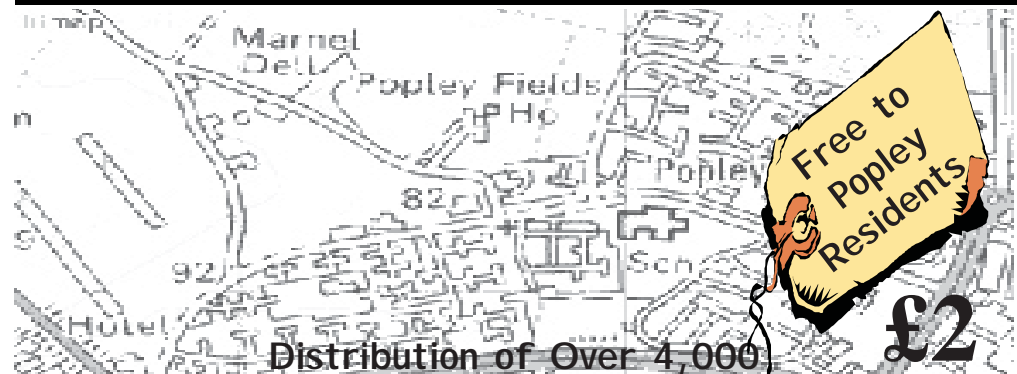
Printed by Personalised Print ☎352434 Email:p.print@virgin.net

POPLEY MATTERS

OVER SEVENTEEN YEARS OF SERVICE TO THE COMMUNITY

March 2010

Issue 97



FULL OF LOCAL NEWS AND VIEWS

Contents

Message from the Editor	Inside cover	Landlord(s) Repairs	Page 23
Popley Neighbourhood Plan	Page 1	What's on @ Everest	Page 25
Fire Safety- Electrical Safety	Page 4	Half Term Mini Get With	Page 25
Message from Arthur	Page 5	Get Creative in Popley	Page 27
Councillors Page	Page 6	Sherborne St John Parish News	Page 28
Air Scouts Report	Page 8	Marnel Community Infant School	Page 29
MFC Popley	Page 9	Win Studio Time to Make a Record	Page 29
Melrose Hall News	Page 12	CAB: Tax Credits	Page 30
Phillips Solicitors Legal Advice	Page 13	Counselling Service	Page 30
Basingstoke Deane Over 55s Forum	Page 15	Pebbles SureStart	Page 31
Celebrating Women as Women	Page 17	Bermuda Community Association	Page 32
Police News	Page 18	NHS News	Page 33
Popley Poets Area	Page 19	Howard Park Bowls	Page 36
Left Over Travel Tokens?	Page 19	Family Learning @ Everest	Page 38
Cornerstone Nursery News	Page 20	The Creation-Haydn	Page 38
British Red Cross Appeal	Page 21	Chloe's Column	Page 40
Sisters are Doing it for Themselves!	Page 22		

Closing date to submit articles & adverts (18-03-10)



Editor
Jane Frankum

Message from the Editor:- It's March and hopefully Spring is just around the corner, and we will get rid of the cold and icy weather. I love to see the Snowdrops followed by the crocus then daffodils and tulips all the colours are so cheerful.

The team would like to see more articles written by the residents. This magazine is for the Popley community for information and to entertain, so it would be great to have some memories and maybe reports from your groups and clubs that you go to? If you don't want to write for the magazine, maybe you could send in your ideas for items we could put into it?

It will be eighteen years in May that the magazine in one form or another has been delivered to Popley. How Popley has grown and we have welcomed our new neighbours. We hope you all feel part of our great community.

This month's issue has a questionnaire that has been devised by the Popley Neighbourhood Partnerships and I sincerely hope that you will fill it in, and Freepost it. As residents of Popley we know best what we would like to see improved or introduced in our area. It could be about Litter, bins, landscape, the buses or lack of them going where we would like to go, parking, community facilities, youth or provision for us older folks? It really is up to you to say what you feel. It is not one per household. Mum, Dad, Gran, Granddad and our youth may all want to fill one in each. You can read more about it on the page opposite.

To contact the team for articles or suggestions either phone Jane Frankum, Editor on 819924 email editor@popleymatters.org.uk; Sub Editor and Layout Paul Frankum paul@popleymatters.org.uk; Distribution Manager Iris King on 411113 Iris@popleymatters.org.uk



Sub Editor
Paul Frankum

To pass back ideas, comments, suggestions, articles or to offer help please write to:- Popley Matters Group, P.O. Box 6727, Basingstoke RG24 9GG, e-mail: editor@popleymatters.org.uk. The views in this publication are not necessarily the views of the Editorial Team, the members of the committee, or Popley Forum/Matters.

Editorial Team:- Editor Jane Frankum; Sub-Editor Paul Frankum; Chair Terry Jones; Distribution Iris King; Committee Members Louise Tuck; Kate Lomas; and Proof Reader Lorraine Beaney

Distribution Team:- Jenny Bailey; Penny Barris; Ken Frankum; Colin Karslake; Simon Leadbetter; Cathy Smith; Stuart Humphries; George Cousins; David Cockerill; Keith Theobald; Glenys Nunn; Vera Mitchell; Sheila Brandes; Elaine Dennis; Carole Whetton; Maud Prowing; Anne Marks; Steve McGowen; Wendy Taylor; Baudine Vandenberg; Wendy Taylor; Jo Micallef; John Perrin; Rebecca and Vernon Butcher; Linda Austen; Nancy Tite; Ken Frankum and Tessa Hollingshead

Advertising Index	PC Martin	Page 11	Stonham Housing	Page 34
B.Handy	Nancyz Crafts	Page 11	1st Response	Page 35
Sue's Driving School	Peter's Fish & Chips	Page 11	Piccolo Pre-school	Page 35
Young's Chinese Food	Easter at St Gabriel's	Page 14	The Knights Circle	Page 35
Accountancy (Small Businesses)	Sell Your Gold	Page 14	M H Autos Service Centre	Page 35
Treasure Island Play Group	QPS Lettings	Page 16	Oakridge West Community Hall	Page 37
Devine Windows	Wanted Houses	Page 16	North Hampshire Services	Page 37
Steve Moore Driving School	Araw Film Services	Page 16	Oakhouse Foods	Page 37
MAD Academy	A30 Driving School	Page24	Your Country Florist	Page 39
Leak Seek	Everest A Mile for Sport	Page 24	Affordable Plumbing	Page 39
CSA 07 FC	Marnel Bowls Club	Page 24	Kids Nursery	Page 39
Kylikes Whipper Snappers	Sentinel	Page 26	Cornerstone Nursery	Inside B/P
Boatman Cleaning Services	Ist Direct	Page 34	Fastfare Pharmacy	Back Page
PKG Plumbing	IREpair Systems Ltd	Page 34		Thankyou for the support

Quality, Flexible, Affordable, Child care



We are a family owned nursery that believes in offering the very best in child care

- Mature experienced staff
- A warm nurturing atmosphere where children feel happy and secure
- A quarter acre garden for children to explore, run and have fun in
- A self contained sleep room for when children need rest
- A focus on wholesome food – freshly prepared on the premises

Our focus is on

- **Affordability – we're cheaper than you think**
- **Flexibility – you can send your child for 4 or 40 hours a week**

Special Offer for Children over 3

- **15 Hours per week totally free**
- **ONLY £3 for each hour after that**

* During term time. If your child is at nursery during lunchtime they will receive a full hot lunch at a cost of £1.60

For details please call **01256 81 81 18** – we're just around the corner in Priestly Road (near the hospital)

Chloe's Column

Hello readers, it's now officially Spring time!! So let's hope for sunny clear skies and no more warnings of snow (I've had enough of the stuff). The days are getting much lighter and flowers are beginning to come out. I love daffodils, they are a sign that spring has come. I am loving the warmer weather, roll on Summer. I have had a fairly good 2010 so far, other than the pressures of year 11 I am happy with the New Year. Can't believe how quick it's all going though. I don't know what's on this month but if you look on the Basingstoke website you might find something interesting. The weather is better so a nice walk, or visit to the park with the little ones might be a nice idea. Teenagers can also visit the youth club up at Junction Six next to Everest Community College for something to do and it's free. Which is good for those who want to save their pennies. When I was on the bus the other day I noticed that the older area of



Oakridge is looking like a bit of an eyesore-especially since there are nice new houses in there now, maybe the old, run down flats should be replaced with newer flats (I am sure the people living in there would thank us). I do feel that Basingstoke has come a long way since I was a little kid though. There is now a shopping centre and a swimming pool in the leisure centre, plus many good parks and the area is also much better looking. So we can be proud of our town, and also Popley (which is obviously the best part of Basingstoke). It will be my friend Beth's 16th on 1st April or April Fools Days, well she **is** a fool! It is also nearly Saint Patrick's Day which is a good holiday for the Irish (like my lovely Nan!) or it's an excuse for adults to act Irish and have a good ol' Guinness. It will be Mother's Day on 14th March so I want to send the love out to my mummy dearest! Love you!

I hope everyone goes out and spends some time with their families to celebrate Mother's Day. Have fun and don't forget to spoil your mum.

Till next month,
Chloe.

Popley Neighbourhood Plan

Since 2006 meetings have taken place with Ward Councillors, various agencies involved in Popley including the Police, Churches, Youth services, Basingstoke and Deane Borough Council, Sentinel Housing, Everest Community College and residents to discuss ways to improve Popley and make it a community to be proud to live in. This group is called the Popley Neighbourhood Partnership.

Lots of things have been achieved since the meetings started, including some Youth activities and facilities, some improvements in transport, parking, footpaths, litter and cleansing, green space improvements, education and skills, but the Partnership now feels that the residents of Popley should have more say in deciding what the priority issues are in our community so that we continue to move forward.

So that everyone gets a chance to voice their opinion, a short questionnaire is being included in Popley Matters magazine. Further copies of this questionnaire can be picked up just in case more than one member of the household wants to fill one in. They can be collected from the Doctors Surgery on Shakespeare Road, and from the local Community Centres in Popley. Please fill out the form and send it back to the Council (postage is free) so that the Partnership gets a true picture of the wishes of Popley residents, and can refresh their Action Plan taking note of your comments.

Councillor Jane Frankum is Chairman of the Executive panel of the Popley Neighbourhood Partnership.

If you would like more information about the Popley Neighbourhood Plan or the questionnaire, please contact Carole Ruse, Community Planning Officer, Basingstoke and Deane Borough Council 01256 845485 carole.ruse@basingstoke.gov.uk

Handyman Services Property Maintenance

Do you need any jobs done around the house? Such as..

Electrical

Sockets replaced/Lights replaced/Light switches replaced

General

Assemble Flat Pack Furniture/Putting up shelves/
Laying flooring/Install LCD-Plasma TV Brackets

Decorating

Painting/Tiling

Plumbing

Tap and bathroom upgrades/Install outside taps

Flooring

Realwood and Laminate

info@bhandy.co.uk

No Job Too Small.

www.bhandy.co.uk

B.Handy

0800 0277708

07926 500 585

SUE'S DRIVING SCHOOL

Tel: 01256 470483 Mobile: 07790 686749

WWW.SUESDRIVINGSCHOOL.COM



FREE
THEORY
TUITION
GIVEN



Electric Power Steering
Electric Mirrors & Windows
Dual Controls
Air Conditioning
Fully Adjustable Seats for
Comfort



Hampshire County Council
Approved Pass Plus Driving Instructor Save £75

E-mail: sue@suesdrivingschool.com

Your nearest florist is Your Country Florist

Award Winning Florist
Traditional and contemporary
flowers for every
occasion.



Visit our website
for inspiration!

Helen Cooper – Senior Florist and Shop
Manager

Luan Squire – Senior Florist and Corporate
Billing

1 Reading Road, Chineham,
Basingstoke RG24 8LN

Tel/Fax: 01256 840222

Ample Car Parking

Visit our website

www.yourcountryflorist.co.uk

Affordable Plumbing & Drainage

24 HOUR EMERGENCY SERVICE

NO Call out Charge

All work carried out, from a dripping

Tap to a blocked drain

no job too small

•28 years experience

•All work guaranteed

•Discounts for senior citizens

Present this advert to receive a 10%
discount

Call Rob on

01256 810223 or

07788 601617

A reliable, friendly and
professional service



Exciting new developments at the Pebbles Children's Centre
Nursery!

From 27th July KIDS' assumed management responsibility for
the Nursery based at Pebbles Children's Centre. KIDS is the
disabled children and young people's charity. There is no other
organisation dedicated to working in partnership with parents
and carers to provide such a wide range of services to disabled
children, young people and their families irrespective of medical
condition or impairment aged 0-25 years.

'We work to give disabled children a happy childhood'

Based within Pebbles Children's Centre in the beautiful grounds of Chineham Park
Primary School, the Nursery provides a stimulating and fun environment for children
to grow and learn. Educational grants are available term time only, for children from
the first term following their 3rd birthday.

Places are available 5 days a week all year round and the children have either a full-
time or part-time place, depending on availability of places and the family's needs.

We are currently taking enquires and bookings

For further information please contact 01256 462804

Family Learning and Fun @ Everest Community College

On Sunday 7th February the Community Department at Everest began the start of their programme of Family Learning trips. Twenty four adults and twenty seven children all boarded a double decker coach bound for London and the Science Museum.

We had a delightful tour around London's famous landmarks with commentary provided by Miss Karen Jones, Head of Humanities, where we learnt some very interesting facts. Did you know that Marble Arch was marooned in the middle of the roundabout in the mid 19th century. Originally, John Nash built it as a gateway for Buckingham Palace, but the great architect got it wrong and made it too small for the royal coaches. So it was moved to its present site and now stands surrounded by a chaotic mass of traffic. It is only accessible through a confusing rabbit warren of smelly underground tunnels, or by dicing with death crossing the road!

Then it was on to the main attraction, the Science Museum - what a thrilling place! The favourite of the day was the Launchpad - the Science Museum's most popular hands-on, brains-on gallery. Launchpad is packed with over fifty interactive exhibits, from firm favourites to world firsts, plus electrifying shows and lively demos, all from the wonderful world of physics. We had great fun with the Thermal Imaging Camera - it's an extraordinary camera which picks up heat instead of light. Standing in front of it you can see yourself in a whole new way - from your cold blue nose to your hot white armpits.

We had a brilliant day and we hope to have several further trips in the future so watch out for What's On @ Everest Community for upcoming events. We would also like to hear from you as to what you would like to do with your family. Please drop Michelle Solley-Andrews a line at Community Dept, Everest Community College, Oxford Way or email m.solley-andrews@everest.hants.sch.uk or call on 01256 337573. This is your community so please get involved.

THE CREATION - HAYDN

The Guildford Philharmonic Orchestra and Hook Choral Society will be performing The Creation under the direction of Nicholas Woods at St Bede's Church, Popley Way, Basingstoke on Saturday 24th April at 7.30pm. Tickets are £12 (£10 concessions) available from Dawson's Music, Festival Place, Basingstoke or by calling Helen on 01256 766522.

Young's Chinese Food

to take away

Unit 2

Carpenters Down

(Off Popley Way)

Popley, Basingstoke

Telephone Orders

841540

Opening Times

Sunday

5:00pm - 10:30pm

Monday To Saturday

12pm - 2pm & 5pm - 10:30pm

Tuesday Closed

Accountancy

For

Small Businesses

- Business Accounts & Tax
- Self Assessment Returns
- Bookkeeping, VAT & Payroll
- Fees fixed in advance
- Meetings at home or work

Call Steve Rayner on

01256 799707 or see

www.taxassist.co.uk/basingstoke



Treasure
Island
Play Group

Come To Us

Treasure Island Playgroup
Join our fun & friendly Playgroup
or Parent & Toddlers group

We have fully qualified & caring staff
Up to 5 Sessions a week FREE
Mon-Fri 9.15am-3.15pm up to 15
hours free for 3 to 4 year olds

For more information call: 01256 414014

Popley Fields Community Centre, Carpenters Down Basingstoke, RG24 9PY



Home Electrical Safety.

In most homes today you will find a huge selection of electrical equipment such as TVs, DVD players, Stereos and Computers to name a few. If these items are not designed to be left switched on (i.e. fridge, freezers etc), always switch them off last thing at night, don't leave Televisions, stereos on standby.

Do not overload electrical sockets and ensure that all plugs are fitted with the correctly rated fuse.

- ✓ When buying electrical garden or DIY tools, look for the British Standard kite mark.
- ✓ Check cables and flexes regularly for frays, kinks and bared wires.
- ✓ Check plugs to make sure they are firmly wired and not damaged.
- ✓ Replace damaged flex or plugs.
- ✓ Use a Residual Current Device (RCD) or Power Breaker on all appliances.
- ✓ Fully unwind extension leads before use.
- ✓ Do not overload plug sockets.
- ✓ Isolate electrics before changing bulbs or cleaning appliances etc.

We Make Life Safer

Useful contact points and further information:

Hampshire Fire and Rescue Service homepage: www.hantsfire.gov.uk

Community Fire Safety Department: 02380 626809

Email: community.firesafety@hantsfire.gov.uk

Need to hire a hall

Oakridge West Community Centre

Licensed for 125 guests
Bar & kitchen facilities available

I deal for all occasions
Ample parking for all
Recently redecorated

Cut out this advert & claim a £25 discount
(No photocopies)

Call Mick 07989161315



Great tasting dishes every time

I would like to order: Please tick the appropriate box(es)

- Free brochure
- Traditional Taster Pack @ **£19.95** Pay on delivery

Name:

Address:

Postcode: Tel:

Return to: Oakhouse Foods, Challeymead, Melksham SN12 8BU

North Hampshire Services

Gas, Plumbing, Electrical

- Natural Gas & LPG
- Installation & Boiler Replacement
- Breakdown / Service
- Landlords Safety Certificates
- Power Flushing
- Central Heating & Radiators
- Hot Water Cylinder Replacements

Covering Basingstoke, Reading, Tadley, Newbury, Andover and the surrounding areas

Call to arrange your servicing/breakdown appointment or for us to come to give you a free quotation on a replacement or new installation

01256 474434

0118 948 7033

Our Engineers are fully qualified and Gas Safe Registered

Gas Safe Registration – 505755



Delicious home delivered meals

Oakhouse Foods is your local home meals service, offering over 300 delicious frozen meals and desserts with FREE home delivery.

Why not try our great value Taster Pack? It offers five days of tasty meals and desserts, and at just £19.95 it's the perfect way to try us for size.

To order your Taster Pack or for a free winter brochure simply call us or complete the coupon and pop it in the post.

0845 643 2009
(local rate)

Oakhouse
FOODS

oakhousefoods.co.uk



HAVE YOU EVER THOUGHT OF TRYING YOUR HAND AT BOWLS?

If the answer is yes but you don't know how to get started then

HOWARD PARK BOWLS CLUB

can help you.

We are looking for new members and would welcome all standards, beginners and experienced players.

Help is available for beginners; we can supply equipment and give you practical help to learn the game of bowls. Also, in order for you to decide whether it is a past-time you would want to become involved in, you would be welcome to use our Club's facilities on 3 occasions without any charge. This includes a comfortable clubhouse.

If you then decide that you would like to carry on, our membership is a very modest £45 a season [May to September] and that entitles you to play as much as you want. The club is open from May – September, midday until dusk.

Howard Park Bowls Club is located in Russell Howard Park, off Western Way, in South Ham, We are a long established club run by the members offering both competitive and social bowls plus a great opportunity for enjoyable, healthy exercise in a very relaxed atmosphere where you can make new friends.

Are you interested?

We hope so – you will be made most welcome.

If you would like more information please contact:- Bill or Sue Ray
on 01256 461597

Dear Friends

In February my wife and I travelled to Canterbury for the installation of our former Bishop of Basingstoke as Bishop of Dover and Kent. It was a splendid occasion and one of the things that the Church can do really well. Canterbury Cathedral was packed with over two thousand people and the procession from the West Door was resplendent with Bishops and Archbishops, civic dignitaries, priests and choir all in their official robes of gold and red and so many other bright colours. It really was quite a stirring sight. It's not just the Church that can do this sort of occasion justice. The State Opening of Parliament, the Trooping of the Colour, even a wedding in church are all great events in which everyone dresses up to celebrate and enjoy. But of course none of the above events just happen – there are all the preparations to make beforehand that will ensure the day goes without hitch!

In the few short weeks of Lent, marked by Shrove Tuesday (Pancake Day) and Ash Wednesday we have time to prepare for another great event, Palm Sunday. This is the day that marks the beginning of the holiest of weeks in the calendar of the Church. Palm Sunday is the day we celebrate Jesus' entry into Jerusalem at the beginning of the last week of his earthly life. As Jesus and his followers approached Jerusalem crowds rushed out to lay down a carpet of palm fronds (hence Palm Sunday) and cloaks as they welcomed him with cries of "hosanna to the Son of David" sadly those cries all too quickly turned to shouts of "Crucify Him"

Lent, then, is the time of preparation for these events. It is a time, not to give up chocolate or cigarettes, but rather to deeply examine our hearts and lives and surrender those attitudes – things we think, say or do – that cause hurt to others. It is a difficult but worthwhile journey to make and has the power to change the direction of our lives. It is not one we make alone! Jesus promised his followers that he would be with them wherever they go and there is nowhere that Jesus has not been. So no matter what mess you may think you're in, Jesus promises that it can be changed and that he will be with you on that journey.

I hope that this Lent, rather than giving up smoking or chocolate or alcohol, perhaps you might take some time out to think about your life; your past, present and future and invite Jesus to shine his light into those places in your heart where you would rather not go and that you would allow him to forgive, heal and restore you.

I pray that Lent and Easter will be a time of real blessing for you and your families. Please do come along to any (or all) of our Easter Services, you'll be most warmly welcomed.

Revd. Arthur

Councillors Page: I had a meeting with a County Planning Officer to talk about the progress of new safer crossings in Popley Way. I am pleased at last to say that it looks like they will finally start in August this year during the school summer holidays. Crossings are needed for the whole length of Popley Way from Marnel School to the Popley Community Park and across the sheltered Housing of Abbey Court and Magnolia Court. Also a priority is the junction in Carpenters Down and Popley Way. There is also a proposal to move the bus stop away from the dropped kerb and practically on the roundabout by Marnel Park. The second phase will be Carpenters Down crossings. The 30mph that should be in a residential area will also be finalised. There will be a public exhibition on 5th March at Popley Fields Community Centre at. Come along and give your comments to Officers and Councillors. Yet another court order had to be processed as the Travellers illegally encamped again on Hampshire County Council land. It took a lot longer than it should have, but this court order has now covered all the development land owned by HCC in Popley. There is a full scrutiny underway of the way forward to get a permanent solution. There will be an opportunity to give your comments to the Council you can call 844844 and ask to speak to the Community Safety Team or contact your local councillors my contact details are Cllr Jane Frankum 819924, write to 405 Abbey Road or email jane.frankum@hants.gov.uk.

Popley West: Work should soon commence on the first stages of path/road repairs in Tintern, Buckfast, Romsey, Fountains and Glastonbury Closes. They have been delayed as the potholes that emerged after the harsh winter needed to be filled in. There were some deep potholes at the traffic lights near St Bedes. They needed to be repaired in the school break as the road had to be dug up and traffic lights switched off so that a proper and permanent job could be done.

Good news, in that the planning appeal to convert another family home into flats was lost by the developer. The reasons put were already problems with parking; not enough room in the back garden for the bins to be stored; and of course the loss of yet another family home. It is almost impossible for young families to get a start on the home ownership ladder so we must do all we can to help. Rental is becoming so dear, families need homes. If you have any concerns or want to contact me my details are phone 472496/819924 email cllr.paul.frankum@basingstoke.gov.uk or write to Popley Labour, 405 Abbey Road, Popley West, Basingstoke, Hants, RG24 9EL

Popley East: Work has started on the demolition of the Faroe and Maldive flats – at long last! The flats had been empty for months. The hoardings went up at the beginning of February and just over a week later the demolition began, with the baths, windows and doors being removed. A revising application, BDB/71880, has been submitted. This is NOT the plan for the shops area, it's a revision for the area fronting onto Shetland Road and the A33. On 11th March there is a meeting at Popley Fields about setting up a residents group for the Popley Poets. Unfortunately the Poets doesn't have a community hall of its own – this is one of the reasons why a residents group would be a good idea – it could provide the necessary focus to campaign for community facilities. Chineham Park's statutory consultation window has now closed and we await the final of three decisions on its closure: the first two have been in favour. I still can not understand how Hampshire County Council think closing a school is the right idea when we have 2,000 new homes being built in Popley! It's all about saving them money to spend in richer areas. Cllr Andy McCormick 01256 419376 or 07879 436985

1st Response

Heating & Plumbing



212273

FOR

- Heating Installations
- Boiler changes/upgrades
 - Servicing
 - Breakdowns
- Landlord Safety Checks
 - Power Flushing

24 hour – 7 Days a Week

CALL

Jamie Davenport

Tel No: 01256 398611

Mobile No: 07876 687422

THE KNIGHTS CIRCLE

(est.1972) reg charity 1032596

Practice your individual mediumship skills, in a friendly atmosphere, at open platform evenings.

All abilities - beginners welcome.

Popley Fields Community Centre, at 7.30pm, on the 1st Thursday of every month.

£3 each workers and sympathetic audience. spiritual healing 6 -7pm and at end of evening with registered healers.

Sue 01256 336375

Jean 01189814880



PRE-SCHOOL NURSERY IN SHERBORNE ST JOHN

We offer high quality care in a happy secure and stimulating environment
Term time only for children 2 ½ years to school age
Open 5 mornings and 2 afternoons a week
Educational structure – Experience and qualified staff
Set in idyllic location with large outdoor area and a playground

Good Ofsted report - Nursery Grants available

For a prospectus call in or contact us
on 075 287 26248

Email: info@piccolopsn.com
www.piccolopreschool.co.uk

Piccolo Pre-school Nursery, The Sports Pavilion, Vyne Road, Sherborne St John, Basingstoke RG24 9HX

M H AUTOS SERVICE CENTRE

Unit 11 Vickers Business Centre
Priestly Road, Basingstoke
RG24 9NP

Servicing & Repairs to all makes & models
Cars & light Commercials
Pre-Mots/Mots arranged by appointment
Clutches, Brakes, Shockers
Free Fit Exhausts, Timing Belts
Tuning, Welding, Diagnostics Checks

Motor vehicle specialist

Free delivery & collection service
Mobile & workshop facilities to suit you

For a friendly & personal service call mark on
Tel: 01256 467707 Mobile: 07879 638650



For all your windscreens, window tinting, towbars and all vehicle glass contact one of our team at 1st Direct.

Tel: 01256 819519

email: sales@1stdirect.uk.com

Unit 1 & 2 Templer Court, Knights Park Road, Basingstoke, RG21 6AB



iRepair Systems Ltd

Unit 9, Hassock Wood Bus. Centre
Stroudley Road
BASINGSTOKE, RG24 8UQ
Phone: 01256 468264,
enquiries@irepairsystems.com

We are authorised by Apple to repair their products, both in and out of warranty. We have online booking, monitoring and requests at www.irepairsystems.com.

We repair warranty ipods too.

"...grateful thanks for your super, speedy and efficient service..." Mrs T. from Hook



Authorised Service Provider

HELP WANTED!

Could YOU help a local teenage mum?

Do YOU have a spare room?

Would YOU like some extra Income?

Do YOU have some time to give? Are you up for a (very rewarding) challenge?

Stonham Supported Lodgings, working with Basingstoke and Deane Borough Council, are developing a new Service to support pregnant teenagers and those with young babies. For more information on how to get involved in supporting young mums or other teenagers please contact Penny Diver on 07725 958288 email penny.diver@homegroup.org.uk

Stonham
part of
home



DEVINE WINDOWS

Previously Adam's Windows

COMMERCIAL and
DOMESTIC WINDOW CLEANING
also CLADDING
and GUTTERS

For a Professional window cleaning service, phone:
01256 411036
07810286470
07979437514

free spirited, high energy
MUSIC AND DANCE
for babies & children

35 and 45 minute classes of pure
MADness with MAD Academy

Babies from 3 months to crawling actions, signing and sensory stimulation

Walkers to 2 years music, movement and motor development

2 to 4 years dance, musicality and beat competency

Classes in Popley, Brighton Hill & Kempshott

Call Cathy on 01256 325464

movement - rhythms - songs - instruments - listening - games

madacademy.com

Music And Dance and a whole lot of fun!



WITH LEARN TO DRIVE
STEVE MOORE
DRIVING SCHOOL

Friendly, Patient Driving Instructor



Competitive Rates



Theory Test Tuition

Nervous Pupils Welcome

Test Preparation including Mock Tests



Pass Plus Registered



Your Local Driving Instructor
www.drivingschoolsbasingstoke.co.uk

48 TINTERN CLOSE POPLEY
356244 (eves)

Leak Seek
Central
Heating
Services



203814

Heating Installations
Boiler Changes and upgrades
Pressurised Hot Water Cylinders

Boiler Servicing

Power Flushing

Breakdowns

Landlord Gas Safety Checks

Bill Martin

Tel. No: 01256 819521

Mobile No 07990 514472

www.leakseek.co.uk



Basingstoke Air Scout Group

Headquarters - Base 2000 Carpenters Down RG24 9AE
Charity number 267734 Headquarters Registration number 42755
www.base2000.co.uk
Group Scout Leader: Colin Karslake (01256) 410559
Base 2000 booking/enquiries - bookings@base2000.co.uk



Chinese New Year, Valentine's Day, Pancake Day and the birthday of the founder of Scouting, Lord Robert Baden Powell all featured in weekly programmes during the dark, cold days of February to keep young people busy and interested. As expected activity badges for experimenting and more indoor-type activities feature each week though a reflective tape trail in the woods can be fun too on wintry evenings! The Beavers enjoyed the District Beaver Scout Party at Popley Fields Centre and consumed loads of food, played lots games and had great fun. The Cubs are looking forward to a visit to the Haymarket Theatre for a performance of the 60-strong cast at the Basingstoke Gang Show during half-term. The Cubs took part in the annual District Cub Mastermind competition at Base 2000 but were up against some stiff competition this year so did not come away with a prize. The Cub section's next big event is the five-a-side football competition.

St George's Day Parade this year will be held in the town centre shopping malls with the support of the Mayor of Basingstoke and Deane Cllr Brian Gurden and by kind permission of Festival Place Management. The Mayor also has other plans to involve schools and other organisations to celebrate England's patron saint within the shopping centre this year. The Scout parade is a Tri-District Event organised on behalf of all members of the Scout Association from throughout the Borough of Basingstoke and Deane and, with several hundred young people from all sections of the movement involved, promises to be a quite a spectacle.

New members are welcome in all sections. Just come along at the appropriate time or give the Section Leader a ring. Scouting is open to both boys and girls within the age range regardless of race, religion or disability. Leaders adapt activities and programmes to cater for young people who are less able or have special needs. Base 2000 is fully accessible to the physically disabled. The first meeting is free but thereafter the subscription is £2 per week (can be paid termly by cheque if preferred). Gift Aid can be applied to subscriptions.

Base 2000 has two halls which can be hired for meetings and community group activities. Hire charges range from £3.50 per hour for the smaller hall on weekdays to £10.



Boy and girls 5½ to 8 years
Meetings: Tuesday 5:30-6:45pm
Eve Alexander 346510

Page 8



Boys and girls aged 8-10½
Tuesday 6:30-8:15pm
Elaine Devenport 323453



Boys and girls aged 10½-15
Monday 7-9pm
Jean-Paul Keetch 810571
Colin Karslake 410559

It's your hospital, you can make a difference!

- **Would you like to be informed of news and developments at your hospital?**
- **Are you interested in receiving invitations to health events?**

Apply to become a member of Basingstoke and North Hampshire NHS Foundation Trust. It doesn't cost you anything and feedback can make a real difference to how your hospital is run and the services we provide.

Benefits of being a member

- You will receive members newsletters and the Summary Annual Report
- You will be invited to health events and the Annual Members Meeting
- You can give feedback on our services
- You have the opportunity to vote in the election of the Council of Governors or stand for election yourself

Anyone aged 14 years or over who lives in one of the areas listed below is able to become a member.

- Basingstoke and Deane
- East Hampshire
- West Berkshire, Hart & Rushmoor
- Anywhere in England and Wales other than the areas listed above

To become a member, you can apply online at www.northhamphshire.nhs.uk (Select 'Become a member' on the membership page) or telephone the membership office at the hospital on 01256 313601.



BERMUDA COMMUNITY ASSOCIATION

REGISTERED CHARITY No 1112068

40-44 BERMUDA CLOSE
BASINGSTOKE HANTS
RG24 9PE

TELEPHONE
OFFICE: 01256 363156
HALL: 01256 308442

We have an excellent Popley Explorers pre-school here
Monday to Friday 8.30am - 3.00pm

Also available-
Breakfast and Lunch club
(for further details contact Elaine on 01256-308442)

Monday evening - C.M.A Keep Fit & Kick Boxing from 6.30 - 8.00pm
Tuesday evening - Community Bingo, doors open at 7.00pm. eyes down at
8.00pm. Finish around 9.45pm. (Light Refreshments
available half time)
Wednesday evening - C.M.A Kick boxing from 7.00 - 8.30pm
Thursday evening - Ladies keep fit from 6.30 -7.30pm
Friday evening- Friday Club (children) 6.30 - 7.30pm
Sunday Afternoon- Christian Family Fellowship 4.00 - 6.30pm

The hall is also available to hire for parties etc at very REASONABLE
RATES.

The Bermuda Community Association
is still looking for a VOLUNTEER RELIEF BINGO CALLER, to help out
once or twice a month for its TUESDAY evening community bingo sessions
between 7.45 - 9.45pm . If anyone is interested please call us on 01256
363156. Must be over 18 years old

Family Prize Bingo Evening on 26th March 2010 at the Popley Fields
Community Centre Hall Carpenters Down. Doors open 6pm, Eyes down at
7pm. Many varied prizes for all the family to enjoy. Organised by your three
Community Centres, bar, hot snacks and refreshments will be available.
Come along for a great evening.



MFC Popley Youth



The season is back on track and finally we can get some much needed football played for
all age groups.

I have started training the U6s and boy oh boy, have we got some characters!
Introducing: Hanger Morris, Rowan, Callum, Jamie, Ronnie, Toby, Sam, Milan and
Jack. Jack is a legend!

The U7s Knights are still unbeaten, playing some excellent football along the way; they
outplayed and beat Tadley Calleva 6-0 & 7-1.

U9s played against Andover (new in the league) semi final and were unfortunately
beaten 1-0. A week later the boys played against Thatcham and totally outplayed their
opposition winning 7-0 and with Loddon drawing 0-0 it means that the Dynamos go
back to the top of the league. Kallum Cousins and Cole Oates were outstanding.

U10s Spurs played Barton Rovers and beat the Reading side 5-1. The Spurs are now
mid table. Well done boys!

The U11s Tornados played against Winklebury Wizards and it was end-to-end stuff
from both teams. The Tornados went 2-1 up late on in the 2nd half and deserved the win,
but it wasn't to be as the Wizards broke through and scored in the dying minutes ending
2-2. What a game, The Chelsea Scout watched and he said That it was the best game
he's seen in years.

I am proud to announce that Shane Pearce has scored his first competitive goal for MFC
Popley. Shane, who is Danny's rock in defence, rarely ventured past the halfway line,
and I'm very surprised he hasn't rung me and chewed me ears off for half hour, ha ha!

Player of the month: Kyren Webster, U7s Knights

Thank you for your support.
Lee Austen.

Any info, Contact: mfcpopley@hotmail.co.uk
Tel.: Lee Austen/Director of football, U6s, U7s&U11s 07946340730
Justin Taylor/Treasurer, U9S 07876684981
Kevin Rush U10s, 07946179677
Daniel Oates U13s, 07765341679



Damien Mckeaveney/Secretary 07918706153

Claire Morris/Welfare officer 07786514548



new football club needs

boys & girls u/6 – u/15's



all home games played at everest community college

please call karen to enquire 01256 - 466442

Kylies Whipper Snappers
Are Popley based – it's true!
Registered with Ofsted
Childminding's what we do

All ages catered for

Local school pick ups

Flexible hours

1st aid trained

Our house is fairly roomy
With toy room, lounge and more
Your kids will never get bored here
Of that we're really sure

With toys & craft a plenty
Secure garden when it's hot
Food is all included
We really do the lot

Drop in soon, we're local
And explain your needs to us
We're very understanding
No pressure, hassle or fuss

A caring family run business
large dedicated playroom, lounge & dining room
Ring Kylie on H (01256) 410119 or M (07971) 864304
Graphics supplied by <http://www.designednot.com>

BOATMAN CLEANING SERVICES

OFFICES - HOUSES - CARPETS & HARDFLOOR CARE

"Here to Serve, Here to Clean"

Office: 0844 504 9552 Mobile: 07880 762257

I haven't got enough time to clean my house, I think I need a cleaner!

Don't Worry we'll do it for you

Special OAP Rates

Regular cleaner from £22

Cleaning Vouchers from £25

Spring cleans from £38.50

Carpets & Hardfloor Care from £40

Basingstoke based and fully Insured for your peace of mind

www.boatmancleaning.co.uk
Email: boatmancleaning@hotmail.co.uk



NEWS FROM PEBBLES CHILDREN'S CENTRE

We have had some exciting new things happening at Pebbles – our 'Song and Sign' group on Thursdays at Shakespeare House 11.30 – 12.15 has taken off soring. Rosa and Debbie are teaching different Nursery Rhymes each week using Makaton sign language. Also the Learning through Play at Popley Fields and the Big Chef Little Chef at Pebbles have been very popular.

You will be hearing a lot about our PEEP Groups – we currently have Baby PEEP on Monday's 1.30 – 2.30 at Pebbles and PEEP Movers 1.00 – 2.30 at Melrose Hall.



WHAT IS 'PEEP'? –

PEEP is a group which creates opportunities for parents from all backgrounds and cultures to share experiences and ideas in a safe and supportive environment.

PEEP recognises that parents are a child's first and most important educators

PEEP recognises that self-esteem is central to learning

PEEP recognises that singing, stories and books are extremely important in a child's life beginning at birth

PEEP recognises relationships are at the heart of learning

PEEP recognises children learn through Play and Interaction

PEEP encourages parents/carers to learn together with their children

PEEP encourages high expectations of what Children and adults can achieve together

Contact the Centre on 01256 357028 to join in with any of our activities or Call in any time Monday – Friday 8am – 6pm and pick up a timetable so you and your child don't miss out on what's going on in your area you can even have a coffee whilst your child plays.

We hope you came along to the half term activities which we put on. Now Watchout for what's on at Easter.

If you are someone with spare time on your hands – children now at school or grown-up – Contact us to see what you can do to help out – VOLUNTEERS are needed in all that we do - so we can make everything even better

Have HMRC asked you to repay overpayments they have made you through Tax Credits ?



The Government has acknowledged that there were serious administrative problems in the two years after the introduction of Tax Credits. Recovery of the debts resulting from overpayments made during these years continues to cause hardship, with many debts still in dispute.

If you have been asked to repay such an overpayment there may be grounds for you to challenge this overpayment;

- if HMRC made a mistake which led to the overpayment and you did what was required of you to put this right; or
- if repaying the overpayment would cause you hardship

Basingstoke Citizens Advice Bureau can help you to look into whether you do have grounds to challenge the overpayment. If you would like our support we operate a drop-in service 10am-3.30pm Monday to Friday (except Thursday which is phone service only 9.30am-11.30am) and Saturday mornings 10am-12pm.

The Advice Line telephone number is 01256 322814.

The CAB outreach service in Popley operates on a Monday afternoon from 1- 3.30pm at the Bermuda Practice, Shakespeare House Health Centre, Shakespeare Road, Popley

Are you....?

- Lacking assertiveness or confidence?
- Feeling anxious?
- Experiencing abuse e.g. emotional, racial, physical or sexual?
- Suffering from poor health?
- Struggling with relationship issues
- Suffering loss
- Having work related problems e.g. stress or financial?
- Feeling trapped by personal problems such as: phobias, suicidal thoughts, depression, eating disorders, sexuality or poor self esteem?

Our counselling service may be able to help you cope

Counselling Service Provides....

A quiet and un-biased exploration of feelings, problems and relationships with assurance of confidentiality

An opportunity to regain control of life and how you manage challenges

An environment in which to increase your confidence, feel understood and not be judged

Counselling is open-ended but is reviewed after six sessions

If you feel you could benefit from counselling, please approach a member of staff who will arrange for you to be contacted by a counsellor.

Appointments are for 50 minutes and are arranged on a Friday morning

Telephone 01256 357 078 for an appointment

As this service is offered through a Children's Centre, priority will be given to adults with children

PKG PLUMBING & TILING

Friendly Popley Based Plumber & Tiler

- BATHROOM INSTALLATIONS
- WALL AND FLOOR TILING
- DRIPPING TAPS AND OVERFLOWS
- INSTALLATION OF W/MACHINES & D/WASHERS

ALL PLUMBING AND TILING WELCOME

**NO CALL OUT CHARGE
FREE ESTIMATES
RELIABLE AND COMPETITIVE**

**Call Paul
01256 350386 / 07776421958
p.k.g.plumbing@btinternet.com**



PC Martin Computer Services

We offer the following services for our home user and small business customers

- IT Consultancy
- Computer and laptop repair
- Hardware and software repair
- IT equipment & Supplies with free local delivery.

You can be assured of high quality yet low cost services with a fixed hourly rate of only **£25.00** per hour and **no call out fee**
Tel: 01256 322590
Mobile: 07903 645 674
services@fixyourcomp.co.uk
www.fixyourcomp.co.uk

NANCYZ CRAFTS

**OPEN TUESDAY TO SATURDAY
10am to 4.30pm**

**A RANGE OF CRAFT SUPPLIES
FOR SCRAP BOOKING, CARD
MAKING**

**CARD MAKING
DEMONSTRATIONS PLANNED
FOR THE NEW YEAR CALL THE
SHOP FOR MORE DETAILS**

**UNIT 6, BASEPOINT
BASINGSTOKE,STROUDLEY
ROAD, RG24 8UP**

TELEPHONE (01256) 406699

PETER'S

**Fish & Chips and Chinese Food to Take Away
35 Madeira Close, Popley Islands,**

好食物 Basingstoke **328740** **和平**
OPENING Hours **幸福**
Monday 5.00pm-11.00pm

Tuesday to Saturday 12noon-2.00pm
5.00pm-11.00pm

Sundays & Bank Holiday Mondays Closed
All price include VAT Cheques accepted.
Minimum £5.00 & with banker's Card

Telephone orders welcome

Important Customer Notice Kindly inform us of any food allergies prior to ordering your meal Some of our food may contain ingredients produced from GM Soya and/or Maize
Menu's Available

<http://www.popleymatters.co.uk/Adverts/Peters.pdf>

Marnel Community Infant School



BEGINNERS PILATES INCORPORATING LEGS, BUMS, AND TUMS

Thursday 4th March 1.30-2.30pm sees the first week of a new exercise group here at the hall. The first lesson is free (normally £4 a week). Please bring an exercise mat and a drink. For more information or to register your interest contact Jenny on 07909334242.

MELROSE COMMUNITY GARDEN PROJECT

It is that time of year again; we are getting the garden ready for spring. The Garden Club meets on the second Saturday in the month 12-2pm. All ages and abilities are welcome but children must be accompanied by a responsible adult. All tools are supplied. Donations of plants/seeds are always welcomed.

PLANT SALE AND EASTER FUN DAY

On Saturday 3rd April 2-4pm, we will be holding an Easter Fun Day to raise funds for our Community Garden. We will be selling plants and there will be a tombola and refreshments. For the children there is an Easter Egg hunt (2pm onwards) and an Easter bonnet/hat competition, prizes will be awarded in four categories under 5s boys and girls and over 5s, boys and girls. Judging will take place at 3pm.

Melrose Community Hall is available to hire for birthdays, wedding receptions, and conferences. **Please Ring Vicki Jackson on 01256 420676 for more information or e-mail us at Melrosehall@tiscali.co.uk or find us on Facebook at Melrose Community Hall.**

This half term, Year 1 children have been busy finding out about owls. They have been reading the book Owl Babies by Martin Waddell. In order to learn even more, they had a visit from Alex who works for Birdworld in Farnham. She was able to bring in an owl, a python, a parrot and a stick insect. Freddy the parrot kept saying hello to the children. He was also able to miaow like a cat! The children really liked it when the stick insect stuck to Alex's hand.

Year 2 have been finding out about board games. They have been designing and making their own games. The children have been busy measuring, cutting and even making clay gamepieces. They were able to invite their parents in for a Games Workshop, playing a wide range of games together.

Year R have been learning lots of fairy stories. They had fun building houses for the Three Little Pigs and testing to see if they were waterproof!

This week we all enjoyed a visit from M and M productions who presented the pantomime of Peter Pan. There was lots of singing, clapping, and shouts of "He's behind you!" Great fun was had by all the children.

Mrs B Cole Head Teacher

NOSTAIRWAY MEDIA at TEDDINGTON STUDIOS IN LONDON & PEACE OF MIND CARE

We have joined forces to bring you this fantastic competition to launch Nostairway Media's new Record Label.

How would you like to record your own single, have a professional video shoot of you performing the single and be able to take home photos of the day, a CD of you singing the winning song, as well as a video of you performing the winning track? This is the prize for 9 lucky people.

To enter you must either be 11-16 years, 16-20 years or 20-25 years. You need to send to us a video of you singing a song of your choice. Entries must be received by Friday 12th March 2010. Entries can be sent by post to Peace of Mind Care, 53 Franklin Avenue, Tadley, Hampshire, RG26 4EY or sent via youtube to peaceofmindcare@hotmail.co.uk

The entries will then be shortlisted before a panel and narrowed down to the top 15 from each category who will then be invited to perform before a live audience in Basingstoke in Hampshire on Friday 14th May 2010 from 7.30 pm. The acts will then be shortlisted to 5 acts per category who will then record the winning track which will be put on our website for public vote. The top 3 acts from each category will then visit the recording studio in London for this fantastic recording experience in June 2010.

Visit www.peaceofmindcare.co.uk for more details

Villager / Popley Matters – March 2010 Sherborne St John Parish Council



Bad Weather. Hopefully we are not suffering a further bout of bad weather as you read this. The Parish Council is aware that treatment of roads in the Village, Merton Rise, Speckled Wood Road and Marnel Park was woefully deficient following the heavy snowfalls. Hampshire CC (HCC) is currently reviewing its own performance, and we will be looking for an improved service in future!

Rooksdown – Old Golf Course (Park Prewett). Basingstoke & Deane Borough Council (BDBC) has recently voted to release this package of land for development. Even though it is currently attractive parkland, it has been defined as a ‘brownfield’ site since it was previously a golf course. The Parish Council has objected to this unnecessary decision, and is seeking assurance that current developments at Rooksdown, Merton Rise and Marnel Park will be completed before commencing the new site. Early development is not expected.

Merton Rise / Marnel Park. HCC has advised the Parish Council that planned local facilities at Merton Rise are not expected until post 2012. The current outline planning permission expired in 2009; plans will be subject to a fresh planning application.

Bottle Banks. Further discussions have been held with BDBC - based on the previous proposals. There is now a further option, in that the District Council is also considering kerbside collections from 2011/2012 – in connection with Hart District Council. In the meantime, residents are urged to help all their neighbours who can’t get to a Bottle Bank.

Chute Recreation Area. The Parish Council is trying to obtain ‘Leader’ funding for a basketball / football activity area to be located on scrub land at the Chute. The application process is exceedingly complex and lengthy...

SID. Our Speed Indicating Device (SID) continues to move around Sherborne St John Village without complaint.

Red Telephone Box. Following adoption of the Elm Road box (based on promises of maintenance by local residents), the Parish Council has also applied to adopt the box in Spring Close - following representation and a ‘promise to maintain’ by Spring Close residents.

Bus Services – No.s 14 and 15 to SSJ Village. The new service has not been welcomed by local residents – it is too indirect, it does not stop at Sentinel Housing, it does not stop at the Railway Station. Representation has been made to BDBC.

Next Meeting – Monday 22nd March, SSJ Village Hall, and don’t forget the website –
www.ssj.hampshire.org.uk

Julian Crawley (Chairman)



‘Legal Corner’

Question

I’m planning to rent a property, what should I know?

Answer

Hayley Eachus, solicitor at Phillips Solicitors, replies:

‘Whatever your reason for renting’ says Hayley Eachus, solicitor at Phillips, ‘you need to make sure you understand your legal obligations and there are some sensible ‘dos’ and ‘don’ts’ to think about as well, before you sign a Lease or Assured Shorthold Tenancy’:

Things you should do

- Do view the property more than once – daylight will show up any defects and in the evening you can check for busyness, noise levels and street parking
- Do check the outside as well as the inside for cracks in the walls, any shared garden and any responsibility for upkeep of the garden
- Do check inside for dampness, heating, smoke alarms, whether the lights and taps work, whether it’s in good condition and if you would be allowed to change the décor
- Do check the inventory and if there isn’t one, make one yourself and give a copy to the landlord. You could also photograph any defects and give pics to the landlord as well
- Do work out what you can reasonably afford and remember to build in a buffer for any extras like utility bills, council tax and telephone bills
- Do familiarise yourself with the notice period so that you are not taken unawares

Things you shouldn’t do

- Don’t wait till you’ve agreed the lease terms before you instruct your solicitor – with his/her knowledge you’ll be able to negotiate the best possible terms
- Don’t skimp on understanding the terms of the lease – the terminology may be complex but your solicitor will help you understand the implications and your responsibilities
- Don’t forget that when you’ve signed the lease, you’ll be bound by the contents and provisions of it. Take legal advice immediately if your landlord seeks to enforce rights against you which you regard as unfair.

‘Finally’, says Hayley, ‘choose a local specialist landlord and tenant solicitor who will be available to meet with you, help you understand your responsibilities and safeguard your position.’

Hayley Eachus is a solicitor at Phillips, specialising in family law and landlord and tenant. Call Hayley on 01256 854633 or email Hayley: heachus@phillips-law.co.uk

Visit our website at www.phillips-law.co.uk

EASTER AT ST GABRIEL'S

Mothering Sunday March 14th 1030am

A special family celebration service

Palm Sunday 28th March 1030am

Blessing and distribution of palm crosses

Good Friday April 2nd

Family Service at 10.00am

12 Noon - 3.00 pm ~ Three Hours by the Cross

Easter Day

7.00am Sunrise Service followed by breakfast in the hall
10.30am All Age Easter Celebration Service

LOOKING TO SELL YOUR GOLD COINS/JEWELLERY?

CHINEHAM based Coin Specialist will buy jewellery in any condition.

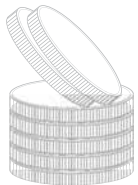
- currently paying £7 per gram for 9 carat gold!

Also looking to purchase any unwanted coins whether they are gold, silver or basemetal.

- currently paying £145.00 for full gold sovereigns

Free quotation with absolutely no obligation

Sell with confidence from a member of the BNTA
(British Numismatist Trade Association)



M J Hughes Telephone: 07917 160308

email: mjhughes87@aol.com



GET CREATIVE IN BASINGSTOKE

Activities in Popley

Tuesday 16th February, 1.00 to 4.00pm
GROW YOUR OWN SUMMER HERBS AND VEG
Popley Fields Community Centre, Carpenters Down
Popley, Basingstoke, RG24 9AE

Thursday 11th March, 10.00am to 12pm
SPRING/EASTER CARD MAKING
Abbey Court, Popley Way, Popley, Basingstoke, RG24 9DX

Monday 15th March, 1.00 to 4.30pm
INTERNATIONAL WOMEN'S DAY CELEBRATION
Popley Fields Community Centre, Carpenters Down
Popley, Basingstoke, RG24 9AE

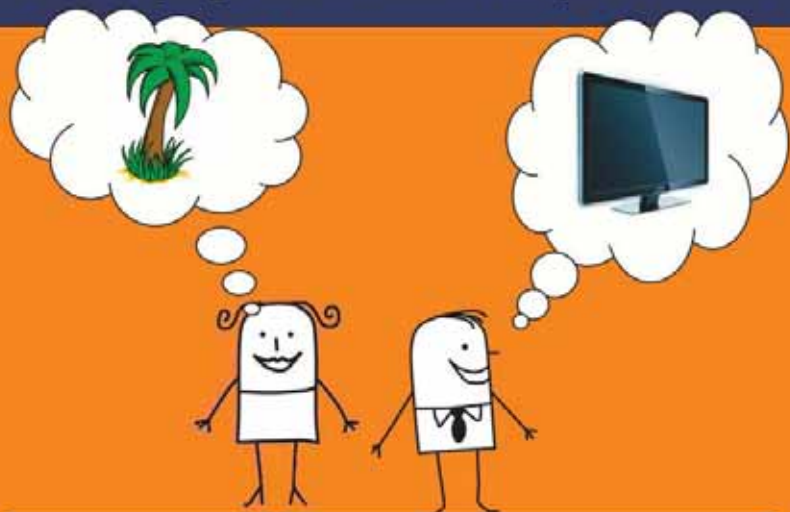
Saturday 27th March
Celebration event - GET CREATIVE IN BASINGSTOKE
More news to follow

For more information contact

BASINGSTOKE VOLUNTARY SERVICES,
The Orchard, White Hart Lane, Basingstoke, Hampshire, RG21 4AF
01256 423816 or email bvs@voluntaryservices.com



Don't pay too much for your loan



How much would you save???

	Loan amount	Weekly Payment	No. Of Payments	Total Payable	%APR
	£500	£10.84	52	£563.53	26.8
	£500	£20.00	41	£820.00	281.5
	£500	£17.50	52	£910.00	272.2

Come and see us at:-

52 Barbel avenue, Basingstoke, RG21 4PQ

Tuesday & Thursday 9.30 - 12.30, Friday 9.30 - 14.30

Telephone 012 5686 9589



www.usal.org.uk

Data taken from www.lenderscompared.org.uk. APR figures are subject to change. United Savings & Loans is the trading name for Hampshire Credit Union Ltd. Hampshire Credit Union Ltd is authorised and regulated by the Financial Services Authority - FRN:213757 and is a member of the Financial Services Compensation Scheme. Hampshire Credit Union is affiliated to the Association of British Credit Unions Ltd.

Over 55s Forum

The next two Over 55s Open Forum dates are Wednesday 14th April and Wednesday 9th June 10.00am to 1.00pm. At the 14th April Open Forum meeting, we are arranging for presentations on:- Pensions, Organic Farming, Police and Health & Fitness. These are subject to change. More details later.

I am again organising a Music & Dance Concert to raise funds for Prostate Cancer equipment at Basingstoke & North Hampshire NHS Foundation Trust Hospital on Sunday 18th April. It will to be held at Queen Mary College, Cliddesden Road, Basingstoke, 2.00 to 5.00pm. We have many trips during the year and below is a list of some of them:-

Performers to date are Basingstoke Concert Band, Basingstoke Irish Dance Group, two young singers from Aldworth College, and the Carnival Chorus. To be arranged as yet, is Park View Junior School Choir (who can sing in sign language), young players from Hampshire or Basingstoke Youth Orchestra, and professional cabaret singer, Jane Marie Cole. I can get replacement acts if I fail to get any of the above. I am sure it will be another good afternoon entertainment by our local artists. There will also be refreshments and our ever popular raffle. Price per ticket is £6.50 in advance or £7.50 on the door. Tickets can be obtained from Gerald Merritt and the Concert is generously being sponsored by LILLYS UK.

30th March 2010 Moreton-in-Marsh (Street Market) and Cotswold Tour (£12 members - £14 non members).

27th April 2010 Abbey Gardens, Malmesbury (£18 members - £20 non Members (price includes entrance fee to gardens)).

29th May 2010 Do-As-You-Please day trip to Worthing. (£11.75 member - £13.75 non Members).

June Mottisfont National Trust (t.b.a. dinner or cream tea).

July Arundel Wildfowl Trust (£19 member - Non Member £21).

September London Eye & Cruise (£35 member - £37 Non Member).

October Canterbury Christmas Markets. (£13 member - £15 non member).

November London-in -Song (sing along to Cockney tunes on the coach) (£17 member - £19 non member.)

30th December 2010 to 2nd January 2011 4 day New Year celebration at the Imperial Hotel, Ilfracombe. Return coach -Full Board -2 half day trips with entertainment each evening. (£249 per person).

Contact Gerald.

Notice to all members, their membership fees (£6) for 2010 should be paid by the end of February. Anyone interested in joining or would like any information please contact Gerald -Secretary on 01256 412119 or 07792535116.



LET!

qps.

QPS LETTINGS & PROPERTY MANAGEMENT

WE HAVE TENANTS WAITING FOR PROPERTY TO LET

OUR LOCAL OFFICE: CHINEHAM

CALL 01256 355 999 OR

VISIT OUR WEBSITE: www.qpslettings.co.uk or email info@qpslettings.co.uk



WANTED URGENTLY



3 or 4 BED HOUSE For local family To RENT or BUY

Please Call Lucy on 07738 322793

Page 16

Araw Film Services PRESENTS



For Special Events

Weddings • Christenings • Parties
Corporate Business • Websites
Community Events

Also We Transfer VHS To DVD
Professionally edited to customer requirements
DVD Label/Case



CALL NOW ON !

Telephone No. 01256 470284
Mobile No. 0785 761 7187
Email: arawproductions@yahoo.co.uk

What's On @ Everest

Junior Fencing Taster Session – Tuesday 9th March – 3.30-5.00pm – 8-16yrs – all abilities - call reception to book 01256 337573 - free

Senior Fencing Taster Session - Sunday 14th March - 12noon-2.00pm - 16+ all abilities welcome - call reception to book 01256 337573 - free

Reading Rockets Basketball Coaching - every Sunday - Years 5/6 9.00-10.00am, Yrs 7-11 10.00-11.00am - £1

Peace Of Mind Charity - Junior Football/Drama/Music - every Sunday 1.00-4.00pm - call Michaela Riley 01189812823 - £1.50

Dance Classes - Infant/Junior/Senior - Call Amy Fowler 07811 299484

Family Learning/Adult Education - for summer programme www.everest.hants.sch.uk

Facilities

The Community Department at Everest are very proud of the facilities they have been charged to operate and would like to invite individuals, groups and organisations to tour the College to find out we may work in partnership - call John Perrin, Community Manager 01256 337573.

Everest Health & Leisure Club

The Health & Fitness arm of the operation goes from strength to strength. Our all inclusive membership now includes unlimited access to the gym and all classes, free badminton and table tennis and free tennis in the summer. New membership strands now include 'Off Peak Gym Only' and '14+ Student'. For more details call reception 01256 337573.

Half Term Mini Get With

Another fun packed week was had by all at the Mini Get With activity scheme held at Everest College.

78 children registered to take part in 26 bookable sessions, 15 of which were fully subscribed. In total, 349 sessions took place. Activities included Multi Sports, Wii Sports, Family Cooking, Fencing, Boxercise, Posters By Computer and Basingstoke Town FC Soccer Academy. Highlights were the Fencing session run by Frank Barrier, which will be followed up by a free taster session on Tuesday 9th March 3.30-5.00pm, and the Soccer Academy run in partnership with the Community Programme at Basingstoke Town FC.

The week will be repeated in the Summer half term and was an ideal prequel to the big 'Get With' event in the summer.

Page 25

L Driving Lessons



- * Grade 6 instructor
- * Excellent pass rate
- * 12 years experience of teaching in west London
- * Manual car

Visit
A30 Driving School
www.a30-drivingschool.co.uk

Kurt 0771 539 3051

Everest Community College
presents.....

Complete A Mile For Sport
Relief

On Sunday 21st March 11am

You can

WALK, RUN or CYCLE

£2 entry to go to Sport Relief

**Turn up on the day – location
Everest Concourse**

More details 01256 337573

Marnell Bowling Club. *Carpenters Down, Popley*

Interested in Green Bowling? We are holding a

Open Invitation Day

on Saturday 24th April 2.00pm start,

We are looking for New Members All ages Male or Female

Very good facilities Modern Club House with Bar

One of the Best Greens in Basingstoke

and we even have flood lights!

So Why not give it a try, If you don't try you don't know!

+ Plenty of Free fresh Air

£10.00 Entry Fees for 1st Year New Bowlers

*Please Ring Geoff Riddy (D) 354535 (E) 413307 or
Stan Mond 466168 Club 333618*

CELEBRATING WOMEN AS WOMEN

You are invited to come
and celebrate
International Women's Day

"International Women's Day is a major day of global
celebration for the economic, political and social
achievements of women."

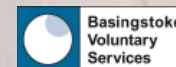
There'll be Demonstrations, Pampering, Kids' Area, Information

FREE ENTRY

Time: 1:00 - 4:30

Date: 15th March

Location: Popley
Field's
Community
Centre
Carpenters
Down
RG24 9AE



For further details please contact Basingstoke Voluntary Services: 01256 423816
or bvs@voluntaryservices.com

Dear Residents,

I'm now into my second month working in Popley and really enjoying it. I have met and spoken with a lot of the residents already and I'm sure my face is now becoming familiar in the area as I conduct patrols.

The last month has been generally quiet in Popley, which may be down to the extreme weather we have received lately.

PCSO Phil Rapley and I have planned Beat Surgeries for the following dates and locations:

1. One Stop, Shakespeare Road - Wed 03 Mar 1100-1200 hrs
- Sun 07 Mar 1500-1600 hrs
2. Outside Melrose Hall, - Wed 03 Mar 1300-1400 hrs
- Sun 07 Mar 1300-1400 hrs

We would encourage as many residents as possible to attend these, and let us know any of your concerns, worries and issues. Alternatively just come along and say hello.

We plan to launch Operation Vixen again soon. Operation Vixen is concentrated on anti-social behaviour, drugs and motorbikes in Carpenters Down Woods. This proved to be a success last year following reports from residents.

Once again a reminder that if you would like a problem which you are currently having, or one of your concerns raised as a potential Popley Safer Neighbourhoods Panel priority please contact one of the team members on the number below.

Thanks for your time and hopefully speak with you soon.

Sarah Danks
Police Community Support Officer 14587
Popley Safer Neighbourhoods Team
Old Basing Beat Office
(T) 0845 045 45 45 (Ex) 626125

<http://www.hampshire.police.uk/internet/local/policing/northeast/basingstoke/town/popley.htm>



Landlord(s) & Tenant(s) failure to effect repairs

When renting through an Assured Shorthold Tenancy a landlord has a legal responsibility under the Landlord and Tenant Act 1985 to effect necessary repairs to the property.

The tenant must also ensure that the property is kept clean and carry out minor maintenance repairs as well as other responsibilities which could be stated in their AST.

If a landlord chooses to ignore a repair issue, your first course of action is to make the landlord aware of his responsibilities and his liability under the law to rectify the fault.

If you have tried all resorts to make the landlord deal with the matter but landlord has failed to take action you are left with two choices:

1. Arranging the work yourself if it falls under the Landlord and Tenant Act 1985 and deducting the costs from future rent or by sending the landlord a bill for works.

2. Make a complaint to the local authority Environmental Health Officer who will make an appointment to view the property and access the situation

The same would apply above if the landlord had made the repair but it was unsatisfactory.

On the other hand, landlords have some arguable reasons at times such as: the tenant not allowing workers entry at reasonable times of the day: reason to believe the tenant is at fault e.g. condensation that has resulted into mould due to poor ventilation and very little heating in winter months; or a blocked/overflowing toilet due to a toilet roll being lodge down cistern. In these cases a landlord should be able to reason with the tenant and find a suitable agreement to resolve the matter immediately. As a landlord, even if it was the tenant's fault, you will need to repair if the problem involves 'necessity of daily life' i.e. hot water, heating etc. The Landlord would need to fix/replace immediately then bill the tenant at 'fair costs'. If the tenant and landlord cannot agree who is liable I would suggest to seek legal advice on the matter.

Vicki -QPS Lettings

Please feel free to ask a question vicki@qpslettings.co.uk

Sisters are doing it for themselves!

A SHOWCASE event to celebrate women's achievements in business and leadership on International Women's Day, Monday 8th March, is set to be held at Basingstoke College of Technology (BCOT).

At this year's event, visitors can experience a range of products and services on offer through organisations led by women. Some are specifically for women, such as mini pampers, fitness and dance sessions, henna tattoos and other beauty tips. Others include: personal development workshops, new crafts, tasty ethnic food and the chance to acquire advice and information.

A range of organisations: Enterprise Solutions, Basingstoke and Deane Borough Council, Hampshire County Council and the HoneyCombe Children's Centre have come together to support this event and hail the role of females within the community.

Annie Noble, Director of Enterprise Solutions, said: "Women across the globe will be celebrating during this week. In Basingstoke, we plan to bring together women from all walks of life - all ages, races, creeds and religions - to mark the day. This is a brilliant opportunity for women to come together to show off their talents, skills and accomplishments. It's an event not to be missed!"

The women exhibiting in the showcase will represent females from different races, religions, backgrounds, cultures, ages and interest groups who are providing services in Basingstoke and surrounding areas.

In particular, the event will target all women in the community who are marginalised and at risk of social exclusion. The aim is for these women to have an opportunity to see the achievements of local females and for these business proprietors and leaders to be role models. Furthermore, the event will give all women a chance to enhance and advance their aspirations, have new experiences, try new things, relax, unwind, have fun and improve their well-being. There will also be a free prize draw and numerous prizes to be won in the raffle.

Men are welcome to this event to share this celebration of women's achievements as wives, mothers, girlfriends, daughters or just as women!

The International Women's Day event is on Monday, 8 March, from 11am until 3pm. Entrance is free.

The event will take place at Basingstoke College of Technology (BCOT), North Site, Lower Concourse, Worting Road, Basingstoke, RG21 8TN.

For further information, contact Annie Noble on 07956 959157, e-mail an@entsols.org or visit www.entsols.co.uk



Do you live in the Popley Poets area?

Come and see how you can get involved in decisions that are made about where you live.

11th March 2010 at 6-7pm
Popley Fields Community Centre

Call Stephen Bate on 01256 844844
for more information

working with
Sentinel

15779



Charity No 1067729

Turquoise Travel Tokens

These are not valid after 31 March 2010.

Please donate any unused tokens to a charity that helps local, older and disabled people.

BASINGSTOKE NEIGHBOUR CARE would be happy to receive any unused Turquoise tokens not used by Wednesday 14 April 2010.

Basingstoke NeighbourCare can provide transport to attend medical appointments or help with shopping and other types of journeys.

Drop them into Melrose Community Centre, Abbey Road or to Iris King 55 Tintern Close, Popley (tel 411113) before Wednesday 14 April 2010.

Alternatively contact Basingstoke NeighbourCare on 01256 423855

We are always looking for volunteer drivers to help us with our work. You can give as much or as little time as you wish travel expenses paid. Please get in touch.

Cornerstone Nursery News – February 2010

Cornerstone Miss Muffets in Popley Way – 01256 840300

During the last few weeks some of the children have been working with colours and numbers and doing lots of different activities around numbers to enhance their understanding.

Our babies have been doing some messy activities using water, jelly and cornflour and they have taken part in a body painting activity, which they all enjoyed getting covered in paint.

In the coming weeks our preschool children are going to start planting some of their vegetable seeds in preparation to eat during the summer months. They are very excited about taking part in this activity and watching the seeds grow in to nice vegetables.

Cornerstone Nursery in Priestly Road – 01256 818118

This month has been a very busy one. We are very pleased to be welcoming lots of new families into the nursery and continue to expand the nursery as we plan to open a new pre-school room 'The Crickets'.

The children have learnt about several events this month. We have enjoyed pancakes on Shrove Tuesday, making cards for our families on Valentine's Day and have been treated to a delicious Chinese meal cooked by our chef Terry to celebrate Chinese New Year.

The children have made lanterns for Chinese New Year and these decorate our main hall area. They have also made colourful dragons and enjoyed trying to use chopsticks.

Cornerstone Sunrise at Aldworth Science College – 01256 356166

Our babies have been learning about their bodies. They have been using different coloured paints to make hand and footprints and learning names of body parts.

Our 2–3 year olds were interested in firemen and fire stations. We have make a display with Fireman Sam, We also have been dressing up, practiced fire drills in nursery and why it is important to wear slippers or shoes in nursery in case we have to evacuate for a fire drill.

Our older children have been looking at their bodies and keeping healthy. We have incorporated stretch and grow exercise sessions and learnt about our muscles. We also learnt about the importance of washing hands, cleaning teeth and have learnt some new songs about teeth with our crocodile puppet.

All settings currently have spaces in all age groups but spaces are limited so please contact the managers at your preferred setting.



Red Cross Appeal Week 2010 **collectors needed**

We're looking for people to pitch in and help during **Red Cross Appeal Week, 2 - 8 May 2010**. And we're asking for as little as **two hours of your time** to help us collect money in your local area. You're guaranteed the **feel-good factor** as you watch the cash pile up, it could be the best two hours you'll spend this May.

You can raise more than £100 without even leaving your street! We can send you a handful of house to house envelopes to distribute to your neighbours or in your local village, just 30 envelopes could **make a huge difference**.

The British Red Cross works tirelessly to help vulnerable people in crisis, whether it is providing food parcels after natural disasters in Asia or a wheelchair to someone in Hampshire - we are there to save lives and change lives. Your time this Red Cross Appeal Week can help us help others.



Call Charlie on 01962 891680 for more details.